



OWNER'S MANUAL

*Venture*  
300

**VP300**

1S6-F8199-E0



Welcome to the Yamaha world of motorcycling!

As the owner of the VP300, you are benefiting from Yamaha's vast experience and newest technology regarding the design and manufacture of high-quality products, which have earned Yamaha a reputation for dependability.

Please take the time to read this manual thoroughly, so as to enjoy all advantages of your VP300. The owner's manual does not only instruct you in how to operate, inspect and maintain your scooter, but also in how to safeguard yourself and others from trouble and injury.

In addition, the many tips given in this manual will help keep your scooter in the best possible condition. If you have any further questions, do not hesitate to contact your Yamaha dealer.

The Yamaha team wishes you many safe and pleasant rides. So, remember to put safety first!

# IMPORTANT MANUAL INFORMATION

---

---

Particularly important information is distinguished in this manual by the following notations:



The Safety Alert Symbol means **ATTENTION! BECOME ALERT! YOUR SAFETY IS INVOLVED!**

## **⚠ WARNING**

Failure to follow **WARNING** instructions could result in severe injury or death to the scooter operator, a bystander, or a person inspecting or repairing the scooter.

## **CAUTION:**

A **CAUTION** indicates special precautions that must be taken to avoid damage to the scooter.

## **NOTE :**

A **NOTE** provides key information to make procedures easier or clearer.

## **NOTE :** \_\_\_\_\_

- This manual should be considered a permanent part of this scooter and should remain with it even if the scooter is subsequently sold.
  - Yamaha continually seeks advancements in product design and quality. Therefore, while this manual contains the most current product information available at the time of printing, there may be minor discrepancies between your scooter and this manual. If you have any questions concerning this manual, please consult your Yamaha dealer.
-

# IMPORTANT MANUAL INFORMATION

---

---

EW000002

## **⚠ WARNING**

**PLEASE READ THIS MANUAL CAREFULLY AND COMPLETELY BEFORE OPERATING THIS SCOOTER.**

---

---

---

EAUM0023

**VP300**  
**OWNER'S MANUAL**  
**© 2004 by MBK INDUSTRIE**  
**1st Edition, January 2004**  
**All rights reserved**  
**Any reprinting or unauthorized use**  
**without the written permission of**  
**MBK INDUSTRIE**  
**is expressly prohibited.**  
**Printed in France.**

# TABLE OF CONTENTS

---

---

1	GIVE SAFETY THE RIGHT OF WAY	1
2	DESCRIPTION	2
3	INSTRUMENT AND CONTROL FUNCTIONS	3
4	PRE-OPERATION CHECKS	4
5	OPERATION AND IMPORTANT RIDING POINTS	5
6	PERIODIC MAINTENANCE AND MINOR REPAIR	6
7	SCOOTER CARE AND STORAGE	7
8	SPECIFICATIONS	8
9	CONSUMER INFORMATION	9
	INDEX	







# GIVE SAFETY THE RIGHT OF WAY

GIVE SAFETY THE RIGHT OF WAY ..... 1-1



# GIVE SAFETY THE RIGHT OF WAY

---

Scooters are fascinating vehicles, which can give you an unsurpassed feeling of power and freedom. However, they also impose certain limits, which you must accept; even the best scooter does not ignore the laws of physics.

Regular care and maintenance are essential for preserving value and operating condition of your scooter. Moreover, what is true for the scooter is also true for the rider: good performance depends on being in good shape. Riding under the influence of medication, drugs and alcohol is, of course, out of the question. Scooter riders — more than car drivers — must always be at their mental and physical best. Under the influence of even small amounts of alcohol, there is a tendency to take dangerous risks.

Protective clothing is as essential for the scooter rider as seat belts are for car drivers and passengers. Always wear a complete scooter suit (whether made of leather or tear-resistant synthetic materials with protectors), sturdy boots, scooter gloves and a properly fitting helmet. Optimum protective wear, however, should not encourage carelessness. Although full-coverage helmets and suits, in particular, create an illusion of total safety and protection, motorcyclists will always be vulnerable. Riders who lack critical self-control run the risk of going too fast and are apt to take chances. This is even more dangerous in wet weather. The good motorcyclist rides safely, predictably and defensively — avoiding all dangers, including those caused by others.

Enjoy your ride!



## Further safe-riding points

- Be sure to signal clearly when making turns.
- Braking can be extremely difficult on a wet road. Avoid hard braking, because the scooter could slide. Apply the brakes slowly when stopping on a wet surface.
- Slow down as you approach a corner or turn. Once you have completed a turn, accelerate slowly.
- Be careful when passing parked cars. A driver might not see you and open a door in your path.
- Railroad crossings, streetcar rails, iron plates on road construction sites, and manhole covers become extremely slippery when wet. Slow down and cross them with caution. Keep the scooter upright, otherwise it could slide out from under you.
- The brake pads could get wet when you wash the scooter. After washing the scooter, check the brakes before riding.
- Always wear a helmet, gloves, trousers (tapered around the cuff and ankle so they do not flap), and a bright colored jacket.
- Do not carry too much luggage on the scooter. An overloaded scooter is unstable.



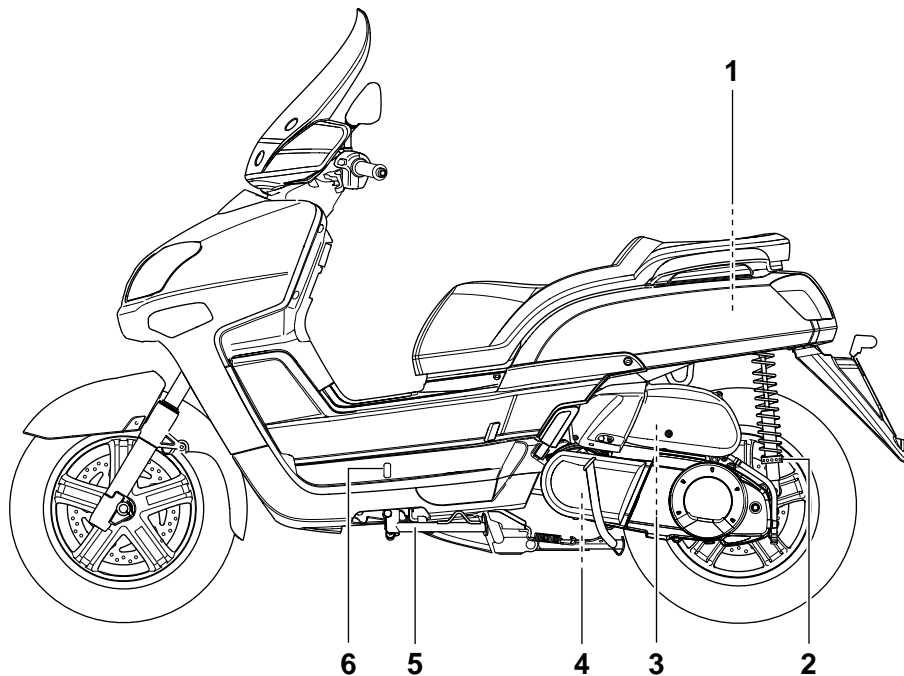
Left view ..... 2-1  
Right view ..... 2-2  
Controls and instruments ..... 2-3

# DESCRIPTION

---

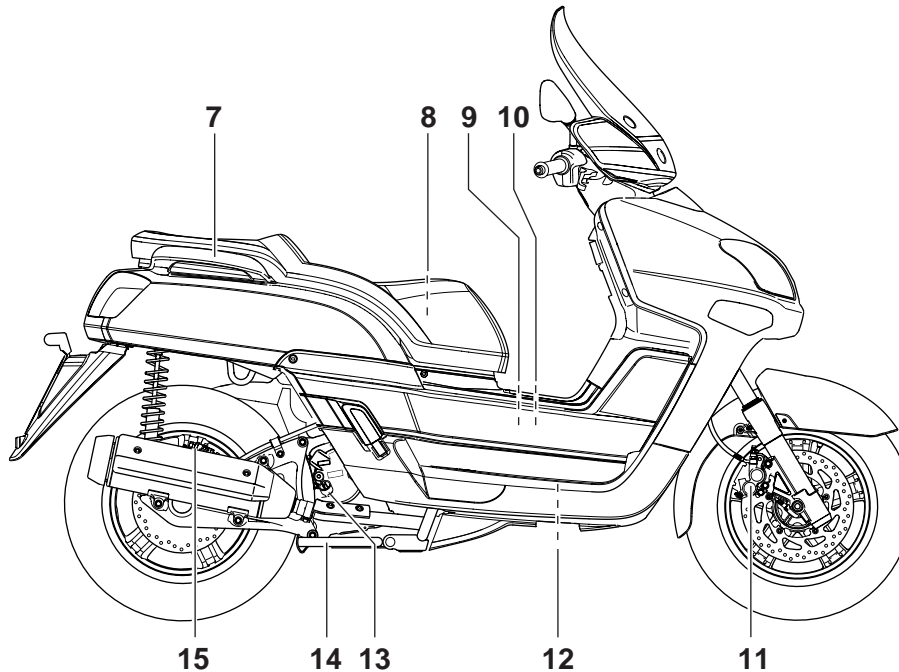
## Left view

2



- |   |             |                                   |                   |
|---|-------------|-----------------------------------|-------------------|
| 1. Rear storage compartment                     | (Page 3-13) | 4. V-belt case air filter element | (page 6-18)       |
| 2. Shock absorber spring preload adjusting ring | (Page 3-14) | 5. Sidestand                      | (page 3-16, 6-27) |
| 3. Air filter element                           | (Page 6-18) | 6. Coolant level check window     | (page 6-17)       |

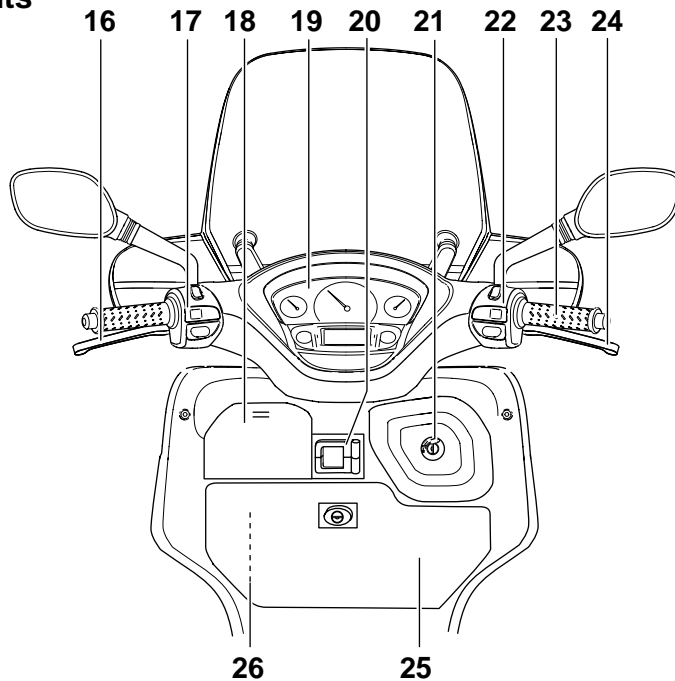
## Right view



- |                           |             |                           |             |
|---------------------------|-------------|---------------------------|-------------|
| 7. Grab bar               | (Page 5-2)  | 12. Main fuse box         | (page 6-30) |
| 8. Fuel tank cap          | (Page 3-10) | 13. Engine oil filler cap | (page 6-13) |
| 9. Battery                | (Page 6-29) | 14. Centerstand           | (page 6-27) |
| 10. Coolant reservoir cap | (Page 6-17) | 15. Rear brake pads       | (page 6-24) |
| 11. Front brake pads      | (page 6-24) |                           |             |

# DESCRIPTION

## Controls and instruments



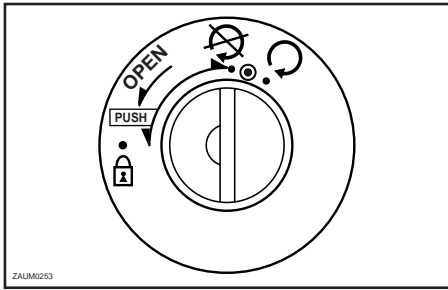
- |  |                  |                                 |                   |
|--|------------------|---------------------------------|-------------------|
| 16. Rear brake lever                       | (Page 3-9, 6-26) | 21. Main switch/steering lock   | (page 3-1)        |
| 17. Left handlebar switches                | (Page 3-8)       | 22. Right handlebar switches    | (page 3-8)        |
| 18. Front storage compartment B            | (Page 3-13)      | 23. Throttle grip               | (page 6-20, 6-26) |
| 19. Speedometer/<br>multi-function display | (page 3-2)       | 24. Front brake lever           | (page 3-9, 6-26)  |
| 20. Luggage hook                           | (page 3-15)      | 25. Front storage compartment A | (page 3-12)       |
|  |                  | 26. Fuse box                    | (page 6-30)       |



# INSTRUMENT AND CONTROL FUNCTIONS

Main switch/steering lock .....	3-1
Indicator lights .....	3-2
Speedometer .....	3-2
Fuel gauge .....	3-3
Battery voltage/coolant temperature gauge .....	3-3
Multi-function display .....	3-4
Anti-theft alarm (optional) .....	3-7
Handlebar switches .....	3-8
Front brake lever .....	3-9
Rear brake lever .....	3-9
Fuel tank cap .....	3-10
Fuel .....	3-10
Catalytic converter .....	3-11
Seat .....	3-12
Storage compartments .....	3-12
Anti-theft device housing .....	3-14
Adjusting the shock absorber assemblies .....	3-14
Luggage hook .....	3-15
Sidestand .....	3-16
Ignition circuit cut-off system .....	3-16
Auxiliary DC jack .....	3-18

# INSTRUMENT AND CONTROL FUNCTIONS



EAU00029

## Main switch/steering lock

The main switch/steering lock controls the ignition and lighting systems, and is used to lock the steering. The various positions are described below.

EAU04580

### ON "⊕"

All electrical circuits are supplied with power; the meter lighting, taillight, license plate light and auxiliary light come on, and the engine can be started. The key cannot be removed.

### NOTE : \_\_\_\_\_

The headlight comes on automatically when the engine is started and stays on until the key is turned to "⊕" or the sidestand is moved down.

EAU00038

### OFF "⊗"

All electrical systems are off. The key can be removed.

EAU00040

### LOCK "🔒"

The steering is locked, and all electrical systems are off. The key can be removed.

### To lock the steering

1. Turn the handlebars all the way to the left.
2. Push the key in from the "⊗" (off) position, and then turn it to "🔒" (lock) while still pushing it.
3. Remove the key.

### To unlock the steering

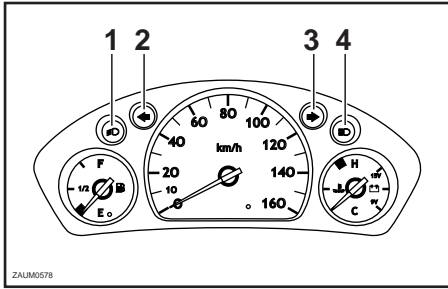
Push the key in, and then turn it to "⊗" (off) while still pushing it.

EW000016

### **⚠ WARNING** \_\_\_\_\_

**Never turn the key to "⊗" or "🔒" while the scooter is moving, otherwise the electrical systems will be switched off, which may result in loss of control or an accident. Make sure that the scooter is stopped before turning the key to "⊗" or "🔒".**

# INSTRUMENT AND CONTROL FUNCTIONS



1. Low beam indicator light "☰"
2. Left turn signal indicator "←"
3. Right turn signal indicator "→"
4. High beam indicator light "☰"

EAU00056

## Indicator lights

Turn signal indicator lights "←" and "→"

EAU04121

The corresponding indicator light flashes when the turn signal switch is pushed to the left or right.

High beam indicator light "☰"

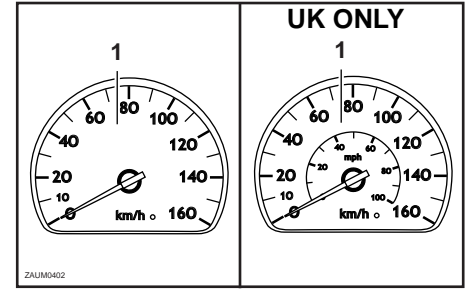
EAU00063

This indicator light comes on when the high beam of the headlight is switched on.

EAU00090

Low beam indicator light "☰"

This indicator light comes on when the low beam of the headlight is switched on.



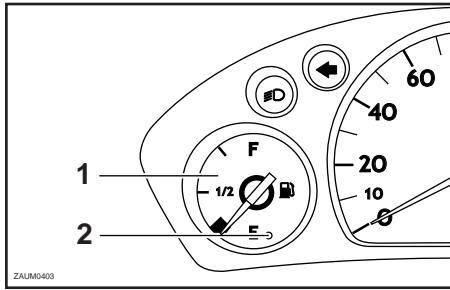
1. Speedometer

EAU04031

## Speedometer

The speedometer shows the riding speed.

# INSTRUMENT AND CONTROL FUNCTIONS



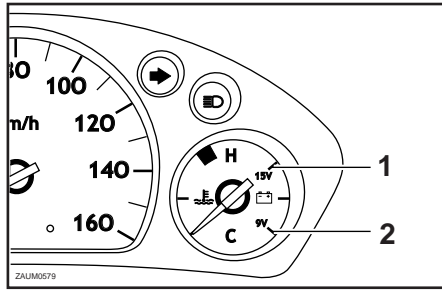
1. Fuel gauge
2. Fuel warning light

EAUM0098

## Fuel gauge

The fuel gauge indicates the amount of fuel in the fuel tank. The needle moves towards "E" (Empty) as the fuel level decreases. When the remaining fuel in the tank reaches approximately 1.9 L, the fuel level warning light will come on and the multi-function display will automatically change to the "Trip/Fuel" mode. (See page 3-4 — 3-5 for details.). If this occurs, refuel as soon as possible.

**NOTE :** \_\_\_\_\_  
Do not allow the fuel tank to empty itself completely.



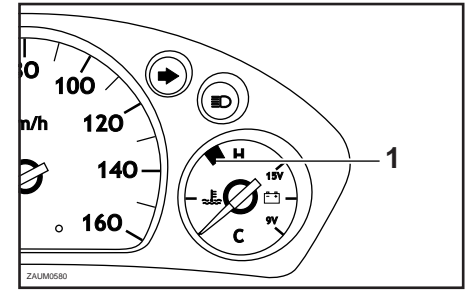
1. High level
2. Low level

EAUM0099\*

## Battery voltage/coolant temperature gauge

When the key is turned to "ⓐ", this gauge indicates the battery voltage level before the engine was stopped.

**NOTE :** \_\_\_\_\_  
If the needle drops to the "9V" mark, have a Yamaha dealer check the battery.



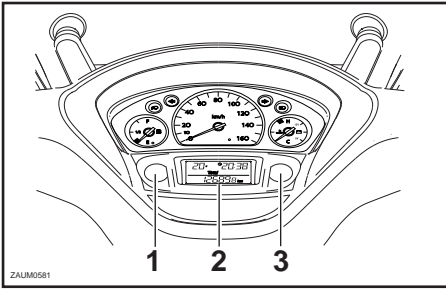
1. Red zone

When the key is turned to "ⓐ", this gauge indicates the coolant temperature. If the needle reaches the red zone, stop the scooter and allow the engine to cool. (See page 6-17 for details.)

**CAUTION:** \_\_\_\_\_  
**Do not operate the engine if it is overheated.**

EC000002

# INSTRUMENT AND CONTROL FUNCTIONS



1. Mode button
2. Digital display
3. Set button

## Multi-function display

EAUM1950

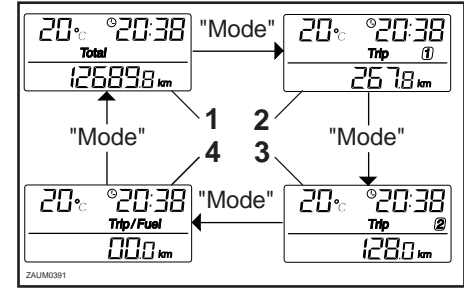
The multi-function display is equipped with the following:

- an odometer (which shows the total distance traveled)
- two tripmeters (which show the distance traveled since they were last set to zero, the time passed since the tripmeters were set to zero, and the average speed traveled during this time)

- a fuel reserve tripmeter (which shows the distance traveled since the fuel level warning light came on)
- a clock
- an ambient temperature display
- an oil change indicator (which comes on when the engine oil should be changed)

### NOTE :

- For the UK, the distance traveled is displayed in miles and the temperature reading is displayed in °F.
- For other countries, the distance traveled is displayed in kilometers and the temperature reading is displayed in °C.



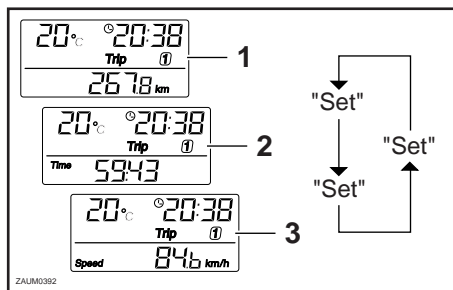
1. Total
2. Trip 1
3. Trip 2
4. Trip/Fuel

## Odometer and tripmeter modes

Pushing the "MODE" button switches the display between the odometer mode "Total" and the tripmeter modes "Trip" in the following order:

Total ⇒ Trip 1 ⇒ Trip 2 ⇒ Trip/fuel  
⇒ Total

# INSTRUMENT AND CONTROL FUNCTIONS



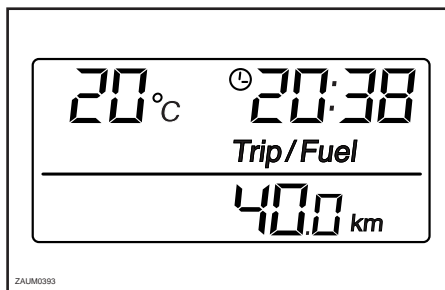
1. Distance
2. Time
3. Average speed

## NOTE :

- The Trip/fuel odometer is only activated if the fuel level warning light comes on.
- The Trip 2 odometer is automatically reset after turning the key to "OFF" (2 Hours).

Pushing the "SET" button when in the tripmeter mode switches the display between the different tripmeter functions in the following order:

Distance ⇒ Time ⇒ Average speed ⇒ Distance

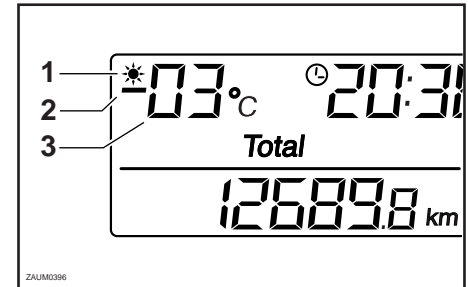
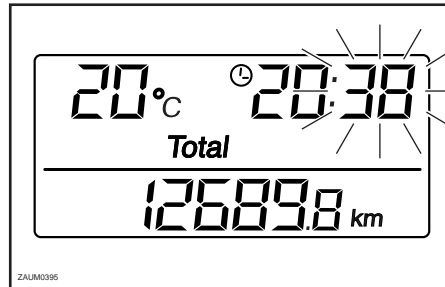
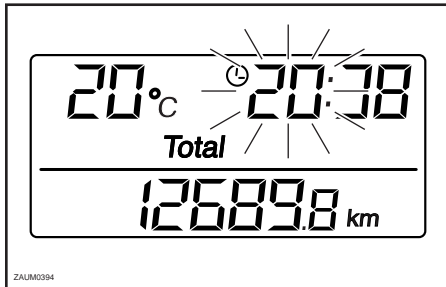


To reset a tripmeter, select it by pushing the "MODE" button, and then push the "SET" button for at least one second. If you do not reset the fuel reserve tripmeter manually, it will reset itself automatically and the display will return to the prior mode after refueling and traveling 5 km (3 mi).

If the fuel level warning light comes on (See page 3-3.), the display will automatically change to the fuel reserve tripmeter mode "Trip/fuel" and start counting the distance traveled from that point. In that case, pushing the "MODE" button switches the display between the various tripmeter and odometer modes in the following order:

Trip/Fuel ⇒ Trip 1 ⇒ Trip 2 ⇒ Total ⇒ Trip/fuel

# INSTRUMENT AND CONTROL FUNCTIONS



1. Frost warning indicator "★"
2. Minus item
3. Temperature

## Clock mode

To set the clock:

1. When the display is in the "Total" mode, push the "SET" button for at least two seconds.
2. When the hour digits start flashing, push the "SET" button to set the hours.

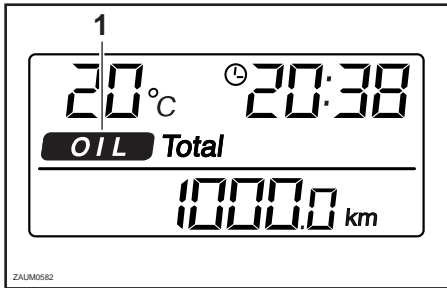
3. Push the "MODE" button, and the minute digits will start flashing.
4. Push the "SET" button to set the minutes.
5. Push the "MODE" button and then release it to start the clock. The display will return to the "Total" mode.

## Ambient temperature display

This display shows the ambient temperature from -30°C (-86°F) to 50°C (122°F).

The frost warning indicator "★" automatically comes on if the temperature is lower than 3°C (37,4°F).

# INSTRUMENT AND CONTROL FUNCTIONS



1. Oil change indicator

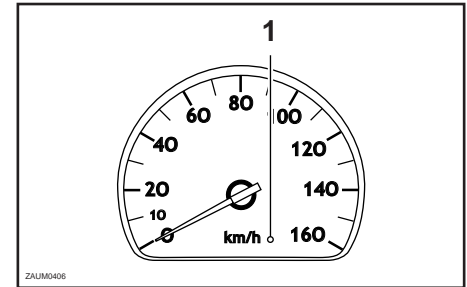
## Oil change indicator "OIL"

The engine oil should be changed when this indicator comes on. The indicator stays on until it is reset. After changing the engine oil, reset the indicator as follows.

1. While holding the "MODE" and "SET" buttons pushed, turn the key to "Q".
2. Continue holding the "MODE" and "SET" buttons pushed for two to five seconds.
3. Release the buttons and the oil change indicator will go off.

## NOTE : \_\_\_\_\_

- The oil change indicator will come on at the initial 1000 km (600 mi) and every 3000 km (4800 mi) thereafter.
- If the engine oil is changed before the oil change indicator comes on (i.e. before the periodic oil change interval has been reached), the indicator must be reset after the oil change for the next periodic oil change to be indicated at the correct time. After resetting, the indicator will come on for two seconds. If the indicator does not come on, repeat the procedure.



1. Alarm indicator light

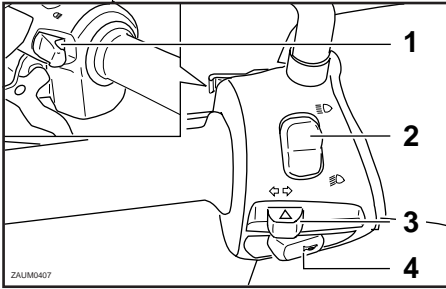
EAU00109

## Anti-theft alarm (optional)

This scooter can be equipped with an optional anti-theft alarm by a Yamaha dealer. Contact a Yamaha dealer for more information.



# INSTRUMENT AND CONTROL FUNCTIONS



1. Pass switch "↔"
2. Dimmer switch "↔ / ↔"
3. Turn signal switch "↔ / ↔"
4. Horn switch "🔊"

EAU00118

## Handlebar switches

EAU00119

### Pass switch "↔"

Press this switch to flash the headlight.

EAU03888

### Dimmer switch "↔ / ↔"

Set this switch to "↔" for the high beam and to "↔" for the low beam.

EAU03889

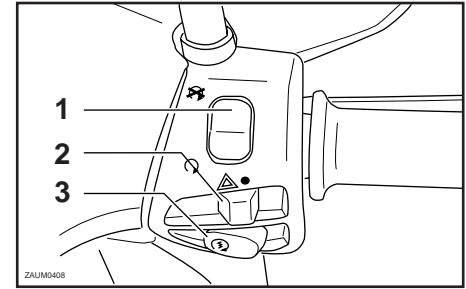
### Turn signal switch "↔ / ↔"

To signal a right-hand turn, push this switch to "↔". To signal a left-hand turn, push this switch to "↔". When released, the switch returns to the center position. To cancel the turn signal lights, push the switch in after it has returned to the center position.

EAU00129

### Horn switch "🔊"

Press this switch to sound the horn.



1. Engine stop switch "🛑 / 🛑"
2. Hazard switch "● / ▲"
3. Start switch "🔊"

EAU03890

### Engine stop switch "🛑 / 🛑"

Set this switch to "🛑" before starting the engine. Set this switch to "🛑" to stop the engine in case of an emergency, such as when the scooter overturns or when the throttle cable is stuck.

EAU03801

### Start switch "🔊"

With the sidestand up, push this switch while applying the front or rear brake to crank the engine with the starter.

EC000005

### CAUTION:

See page 5-1 for starting instructions prior to starting the engine.

# INSTRUMENT AND CONTROL FUNCTIONS

## Hazard switch "●", "△"

EAUM0111

With the key in the "Q" position, set this switch to "△" to turn on the hazard lighting (simultaneous flashing of all turn signal lights). To turn off the hazard lighting, set this switch to "●" and, then turn the key to "⊗".

### NOTE :

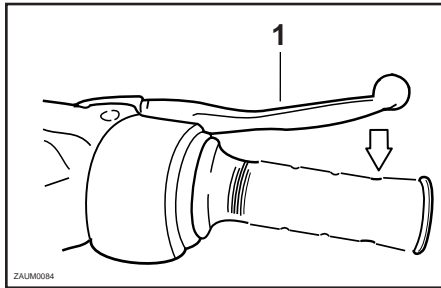
Even if the key is turned from "Q" to "⊗" with the hazard lighting on, the hazard lighting will continue to flash regardless of the hazard switch position. To cancel the hazard lighting, the key must be turned to "Q" and the hazard switch must be set to the "●" position.

The hazard lighting is used in case of an emergency or to warn other drivers when your scooter is stopped where it might be a traffic hazard.

### CAUTION:

EC000006

**Do not use the hazard light for an extended length of time, otherwise the battery may discharge.**

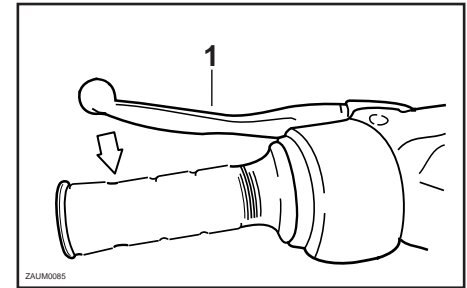


1. Front brake lever

EAU03882

## Front brake lever

The front brake lever is located on the right handlebar grip. To apply the front brake, pull this lever toward the handlebar grip.



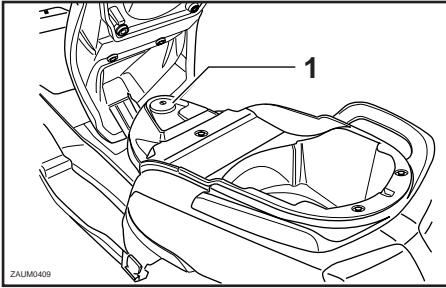
1. Rear brake lever

EAU00163

## Rear brake lever

The rear brake lever is located on the left handlebar grip. To apply the rear brake, pull this lever toward the handlebar grip.

# INSTRUMENT AND CONTROL FUNCTIONS



1. Fuel tank cap

EAU00176\*

## Fuel tank cap

### To remove the fuel tank cap

1. Open the seat. (See page 3-12 for seat opening and closing procedures.)
2. Insert the key into the lock and turn it 1/4 turn clockwise.
3. The lock will be released and the fuel tank cap can be removed.

### To install the fuel tank cap

1. Insert the fuel tank cap into the tank opening with the marks on the cap and tank aligned.
2. Turn the key counterclockwise to the original position, and then remove it.

### NOTE :

Do not forget to remove the key before closing the seat.

3. Close the seat.

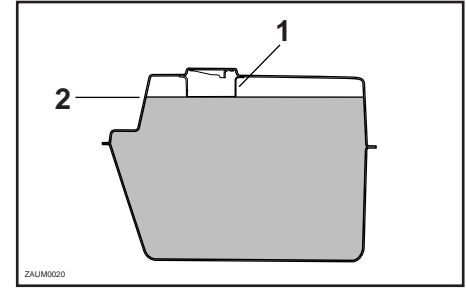
### NOTE :

The fuel tank cap cannot be installed unless the key is in the lock. In addition, the key cannot be removed if the cap is not properly installed and locked.

### **⚠ WARNING**

Make sure that the fuel tank cap is properly closed and locked before riding.

EW000023



1. Filler tube  
2. Fuel level

EAU003753

## Fuel

Make sure that there is sufficient fuel in the tank. Fill the fuel tank to the bottom of the filler tube as shown.

### **⚠ WARNING**

- Do not overfill the fuel tank, otherwise it may overflow when the fuel warms up and expands.
- Avoid spilling fuel on the hot engine.

EW000130

# INSTRUMENT AND CONTROL FUNCTIONS

3

EAU00185  
EC000008

## CAUTION:

**Immediately wipe off spilled fuel with a clean, dry, soft cloth, since fuel may deteriorate painted surfaces or plastic parts.**

EAU04284

Recommended fuel:  
REGULAR UNLEADED  
GASOLINE ONLY  
Fuel tank capacity:  
Total amount:  
10.9 L  
Reserve amount:  
1.9 L

ECA00104

## CAUTION:

**Use only unleaded gasoline. The use of leaded gasoline will cause severe damage to internal engine parts, such as the valves and piston rings, as well as to the exhaust system.**

Your Yamaha engine has been designed to use regular unleaded gasoline with a research octane number of 91 or higher. If knocking (or pinging) occurs, use a gasoline of a different brand or premium unleaded fuel. Use of unleaded fuel will extend spark plug life and reduce maintenance costs.

EAU03098

## Catalytic converter

This scooter is equipped with a catalytic converter in the muffler.

EW000128

## ⚠ WARNING

**The exhaust system is hot after operation. Make sure that the exhaust system has cooled down before doing any maintenance work.**

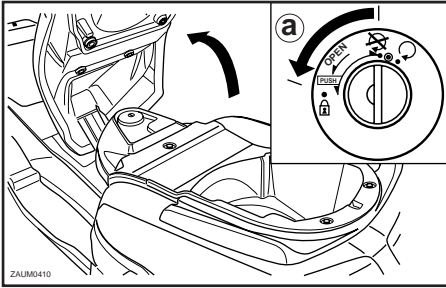
EC000114

## CAUTION:

**The following precautions must be observed to prevent a fire hazard or other damages.**

- **Use only unleaded gasoline. The use of leaded gasoline will cause unreparable damage to the catalytic converter.**
- **Never park the scooter near possible fire hazards such as grass or other materials that easily burn.**
- **Do not allow the engine to idle too long.**

# INSTRUMENT AND CONTROL FUNCTIONS



a. Open

EAU03802

## Seat

### To open the seat

1. Place the scooter on the centerstand.
2. Insert the key into the main switch, and then turn it counterclockwise.

### NOTE :

Do not push inward when turning the key.

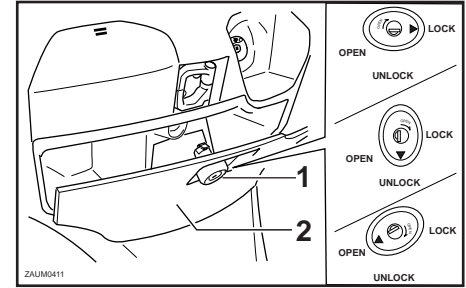
3. Fold the seat up.

### To close the seat

1. Fold the seat down, and then push it down to lock it in place.
2. Remove the key from the main switch if the scooter will be left unattended.

### NOTE :

Make sure that the seat is properly secured before riding.



1. Lock
2. Front storage compartment A

EAU0096\*

## Storage compartments

### Front storage compartment A

#### To unlock the storage compartment

Insert the key in the lock and turn it 1/4 turn clockwise.

#### To open the storage compartment when it is unlocked

Turn the knob 1/4 turn clockwise. The knob will return to its original position after released.

#### To close the storage compartment

Push the lid into the original position.

# INSTRUMENT AND CONTROL FUNCTIONS

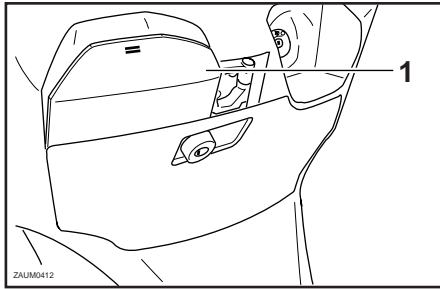
## To lock the storage compartment

Insert the key in the lock and turn it 1/4 turn counterclockwise, and then remove the key.

### **⚠ WARNING**

EWA00005

- Do not exceed the load limit of 1 kg for the storage compartment.
- Do not exceed the maximum load of 202 kg for the vehicle.



1. Front storage compartment B

EAUM0101\*

## **Front storage compartment B**

### To open the storage compartment

Push on the "—" mark of the storage compartment lid.

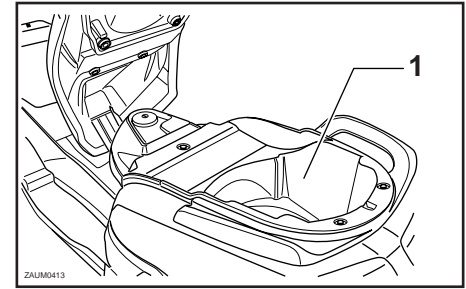
### To close the storage compartment

Push the lid into the original position.

### **⚠ WARNING**

EWA00034

**Do not store heavy items in this compartment.**



1. Rear storage compartment

EAUM0061\*

## **Rear storage compartment**

There is a storage compartment under the seat. (See page 3-12 for seat opening and closing procedures.)

### **⚠ WARNING**

EWA00005

- Do not exceed the load limit of 5 kg for the storage compartment.
- Do not exceed the maximum load of 202 kg for the vehicle.

# INSTRUMENT AND CONTROL FUNCTIONS

## CAUTION:

EC000010

Keep the following points in mind when using the storage compartment.

- Since the storage compartment accumulates heat when exposed to the sun, do not store anything susceptible to heat inside it.
- To avoid humidity from spreading through the storage compartment, wrap wet articles in a plastic bag before storing them in the compartment.
- Since the storage compartment may get wet while the scooter is being washed, wrap any articles stored in the compartment in a plastic bag.
- Do not keep anything valuable or breakable in the storage compartment.

To store a helmet in the storage compartment, place the helmet with the front facing backward.

## NOTE :

- Some helmets cannot be stored in the storage compartment because of their size or shape.
- Do not leave your scooter unattended with the seat open.

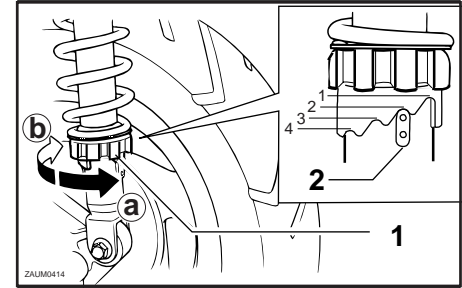
EAM1940

## Anti-theft device housing

The anti-theft device housing, located in the storage compartment under the seat, is designed to hold a genuine Yamaha U-LOCK. (See page 3-12 for seat opening and closing procedures.) When placing a U-LOCK in the storage compartment, securely fasten it with the straps. When the U-LOCK is not in the storage compartment, be sure to secure the straps to prevent losing them.

## NOTE :

Some U-LOCKS cannot fit into the housing due to their size or shape.



1. Spring preload adjusting ring
2. Position indicator

EAU00300

## Adjusting the shock absorber assemblies

Each shock absorber assembly is equipped with a spring preload adjusting ring.

## CAUTION:

EC000015

Never attempt to turn an adjusting mechanism beyond the maximum or minimum settings.

# INSTRUMENT AND CONTROL FUNCTIONS

## **⚠ WARNING**

EW000040

**Always adjust both shock absorber assemblies equally, otherwise poor handling and loss of stability may result.**

	Setting
Minimum (soft)	1
Standard	2
Maximum (hard)	4

3

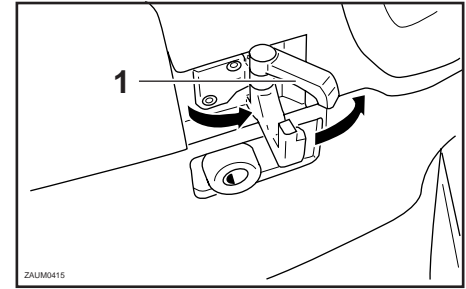
Adjust the spring preload as follows.

To increase the spring preload and thereby harden the suspension, turn the adjusting ring on each shock absorber assembly in direction **a** .

To decrease the spring preload and thereby soften the suspension, turn the adjusting ring on each shock absorber assembly in direction **b** .

## **NOTE :**

Align the appropriate notch in the adjusting ring with the position indicator on the shock absorber.



1. Luggage hook

EAUT0020

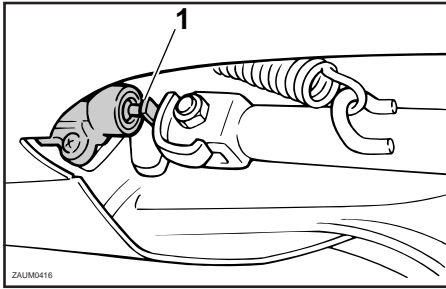
## **Luggage hook**

## **⚠ WARNING**

EWT00002

- **Do not exceed the load limit of 3 kg for the luggage hook.**
- **Do not exceed the maximum load of 202 kg for the vehicle.**





1. Sidestand switch

EAU00330

## Sidestand

The sidestand is located on the left side of the frame. Raise the sidestand or lower it with your foot while holding the scooter upright.

### NOTE :

The built-in sidestand switch is part of the ignition circuit cut-off system, which cuts the ignition in certain situations. (See further down for an explanation of the ignition circuit cut-off system.)

### **⚠ WARNING**

EW000044

The scooter must not be ridden with the sidestand down, or if the sidestand cannot be properly moved up (or does not stay up), otherwise the sidestand could contact the ground and distract the operator, resulting in a possible loss of control. Yamaha's ignition circuit cut-off system has been designed to assist the operator in fulfilling the responsibility of raising the sidestand before starting off. Therefore, check this system regularly as described below and have a Yamaha dealer repair it if it does not function properly.

## Ignition circuit cut-off system

EAU00337

The ignition circuit cut-off system (comprising the sidestand switch and brake light switches) has the following functions.

- It prevents starting when the sidestand is up, but neither brake is applied.
- It prevents starting when either brake is applied, but the sidestand is still down.
- It cuts the running engine when the sidestand is moved down.

Periodically check the operation of the ignition circuit cut-off system according to the following procedure.



### **⚠ WARNING**

EW000045

**If a malfunction is noted, have a Yamaha dealer check the system before riding.**

# INSTRUMENT AND CONTROL FUNCTIONS

3

With the engine turned off:  
1. Move the sidestand down.  
2. Make sure that the engine stop switch is set to .  
3. Turn the key to .  
4. Keep the front or rear brake applied.  
5. Push the start switch.  
**Does the engine start?**

NO YES

**NOTE:** \_\_\_\_\_  
This check is most reliable if performed with a warmed-up engine.  
\_\_\_\_\_

The sidestand switch may be defective.  
**The scooter should not be ridden** until checked by a Yamaha dealer.

With the engine still off:  
6. Move the sidestand up.  
7. Keep the front or rear brake applied.  
8. Push the start switch.  
**Does the engine start?**

YES NO

The brake switch may be defective.  
**The scooter should not be ridden** until checked by a Yamaha dealer.

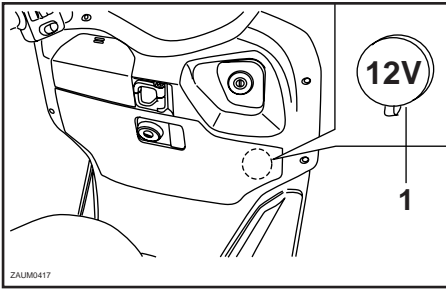
With the engine still running:  
9. Move the sidestand down.  
**Does the engine stall?**

YES NO

The sidestand switch may be defective.  
**The scooter should not be ridden** until checked by a Yamaha dealer.

The system is OK. **The scooter can be ridden.**

EC000028\*



1. Auxiliary DC jack

EAUM0102\*

## Auxiliary DC jack

This scooter is equipped with an auxiliary DC jack in the storage compartment A.

12-V accessories connected to the auxiliary jack can be used when the key is in the "Q" position and should only be used when the engine is running.

### CAUTION:

The accessories connected to the auxiliary DC jack should not be used with the engine turned off, and their combined load must never exceed 2.5 A or 30 W, otherwise the battery may discharge.

### To use the auxiliary DC jack

1. Turn the key to "Q".
2. Remove the dust cap from the receptacle.
3. Insert the accessory plug into the receptacle.
4. Turn the key to "Q", and then start the engine. (See page 5-1 for details.)
5. When the accessory jack is not being used, make sure that the dust cap is installed onto the receptacle for protection.



# PRE-OPERATION CHECKS

---

Pre-operation check list ..... 4-1

# PRE-OPERATION CHECKS

The condition of a vehicle is the owner's responsibility. Vital components can start to deteriorate quickly and unexpectedly, even if the vehicle remains unused (for example, as a result of exposure to the elements). Any damage, fluid leakage or loss of tire air pressure could have serious consequences. Therefore, it is very important, in addition to a thorough visual inspection, to check the following points before each ride.

EAU03439

## Pre-operation check list

ITEM	CHECKS	PAGE
<b>Fuel</b>	<ul style="list-style-type: none"><li>• Check fuel level in fuel tank.</li><li>• Refuel if necessary.</li><li>• Check fuel line for leakage.</li></ul>	3-3 — 3-4, 3-10 — 3-11
<b>Engine oil</b>	<ul style="list-style-type: none"><li>• Check oil level in engine.</li><li>• If necessary, add recommended oil to specified level.</li><li>• Check vehicle for oil leakage.</li></ul>	6-13 — 6-15
<b>Final transmission oil</b>	<ul style="list-style-type: none"><li>• Check vehicle for oil leakage.</li></ul>	6-16
<b>Coolant</b>	<ul style="list-style-type: none"><li>• Check coolant level in reservoir.</li><li>• If necessary, add recommended coolant to specified level.</li><li>• Check cooling system for leakage.</li></ul>	6-17
<b>Front brake</b>	<ul style="list-style-type: none"><li>• Check operation.</li><li>• If soft or spongy, have Yamaha dealer bleed hydraulic system.</li><li>• Check fluid level in reservoir.</li><li>• If necessary, add recommended brake fluid to specified level.</li><li>• Check hydraulic system for leakage.</li></ul>	3-9, 6-23 — 6-25
<b>Rear brake</b>	<ul style="list-style-type: none"><li>• Check operation.</li><li>• If soft or spongy, have Yamaha dealer bleed hydraulic system.</li><li>• Check fluid level in reservoir.</li><li>• If necessary, add recommended brake fluid to specified level.</li><li>• Check hydraulic system for leakage.</li></ul>	3-9, 6-23 — 6-25

# PRE-OPERATION CHECKS

ITEM	CHECKS	PAGE
<b>Throttle grip</b>	<ul style="list-style-type: none"> <li>• Make sure that operation is smooth.</li> <li>• Check cable free play.</li> <li>• If necessary, have Yamaha dealer adjust cable free play and lubricate cable and grip housing.</li> </ul>	6-20, 6-26
<b>Wheels and tires</b>	<ul style="list-style-type: none"> <li>• Check for damage.</li> <li>• Check tire condition and tread depth.</li> <li>• Check air pressure.</li> <li>• Correct if necessary.</li> </ul>	6-21 — 6-23
<b>Brake levers</b>	<ul style="list-style-type: none"> <li>• Make sure that operation is smooth.</li> <li>• Lubricate lever pivoting points if necessary.</li> </ul>	3-9, 6-23, 6-26
<b>Centerstand, sidestand</b>	<ul style="list-style-type: none"> <li>• Make sure that operation is smooth.</li> <li>• Lubricate pivots if necessary.</li> </ul>	6-27
<b>Chassis fasteners</b>	<ul style="list-style-type: none"> <li>• Make sure that all nuts, bolts and screws are properly tightened.</li> <li>• Tighten if necessary.</li> </ul>	—
<b>Instruments, lights signals and switches</b>	<ul style="list-style-type: none"> <li>• Check operation.</li> <li>• Correct if necessary.</li> </ul>	3-1 — 3-8, 6-32 — 6-35
<b>Sidestand switch</b>	<ul style="list-style-type: none"> <li>• Check operation of ignition circuit cut-off system.</li> <li>• If system is defective, have Yamaha dealer check vehicle.</li> </ul>	3-16

# PRE-OPERATION CHECKS

---

---

**NOTE :**

Pre-operation checks should be made each time the scooter is used. Such an inspection can be accomplished in a very short time; and the added safety it assures is more than worth the time involved.

---

**⚠ WARNING**

EWA00033

**If any item in the Pre-operation check list is not working properly, have it inspected and repaired before operating the scooter.**

---



# OPERATION AND IMPORTANT RIDING POINTS

---

Starting the engine .....	5-1
Starting off .....	5-2
Acceleration and deceleration .....	5-3
Braking .....	5-3
Tips for reducing fuel consumption .....	5-4
Engine break-in .....	5-4
Parking .....	5-5

# OPERATION AND IMPORTANT RIDING POINTS

EAU01118  
EW000129

## **⚠ WARNING**

- Become thoroughly familiar with all operating controls and their functions before riding. Consult a Yamaha dealer regarding any control or function that you do not thoroughly understand.
- Never start the engine or operate it in a closed area for any length of time. Exhaust fumes are poisonous, and inhaling them can cause loss of consciousness and death within a short time. Always make sure that there is adequate ventilation.
- For safety, always start the engine with the centerstand down.

EAU03843

## Starting the engine

### **CAUTION:**

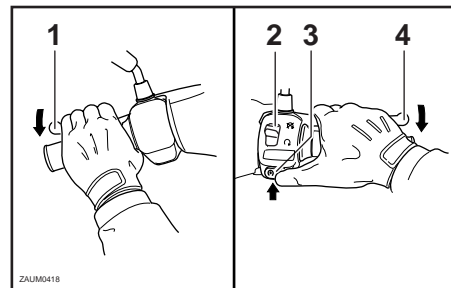
See page 5-4 for engine break-in instructions prior to operating the vehicle for the first time.

In order for the ignition circuit cut-off system to enable starting, the sidestand must be up.

EW000054

### **⚠ WARNING**

- Before starting the engine, check the function of the ignition circuit cut-off system according to the procedure described on page 3-16.
- Never ride with the sidestand down.



1. Rear brake lever
2. Engine stop switch
3. Start switch
4. Front brake lever

1. Turn the key to "Q" and make sure that the engine stop switch is set to "Q".
2. Close the throttle completely.
3. Start the engine by pushing the start switch while applying the front or rear brake.

# OPERATION AND IMPORTANT RIDING POINTS

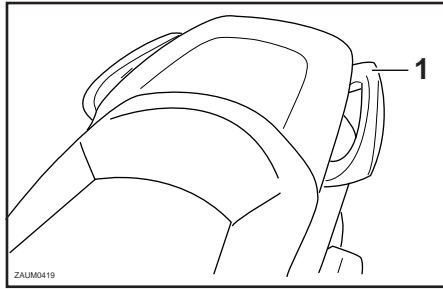
## NOTE : \_\_\_\_\_

If the engine does not start, release the start switch, wait a few seconds, and then try again. Each starting attempt should be as short as possible to preserve the battery. Do not crank the engine more than 10 seconds on any one attempt. If the engine does not start, try with the throttle open 1/8 turn.

## CAUTION: \_\_\_\_\_

ECA00045

**For maximum engine life, never accelerate hard when the engine is cold!**



1. Grab bar

## Starting off

EAU00433

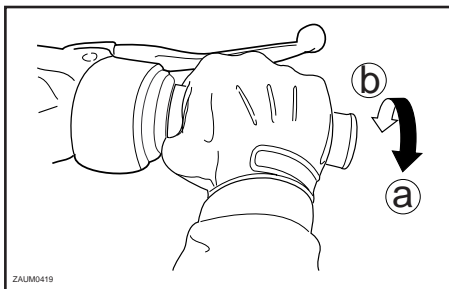
## NOTE : \_\_\_\_\_

Before starting off, allow the engine to warm up.

1. While pulling the rear brake lever with your left hand and holding the grab bar with your right hand, push the scooter off the centerstand.
2. Sit astride the seat, and then adjust the rear view mirrors.

3. Switch the turn signal on.
4. Check for oncoming traffic, and then slowly turn the throttle grip (on the right) in order to take off.
5. Switch the turn signal off.

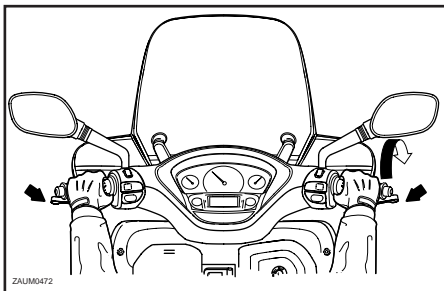
# OPERATION AND IMPORTANT RIDING POINTS



EAU00434

## 5 Acceleration and deceleration

The speed can be adjusted by opening and closing the throttle. To increase the speed, turn the throttle grip in direction ①. To reduce the speed, turn the throttle grip in direction ②.



EAU00435

## Braking

1. Close the throttle completely.
2. Apply both front and rear brakes simultaneously while gradually increasing the pressure.

## ⚠ WARNING

EW000057

- Avoid braking hard or suddenly (especially when leaning over to one side), otherwise the scooter may skid or overturn.
- Railroad crossings, streetcar rails, iron plates on road construction sites, and manhole covers become extremely slippery when wet. Therefore, slow down when approaching such areas and cross them with caution.
- Keep in mind that braking on a wet road is much more difficult.
- Ride slowly down a hill, as braking downhill can be very difficult.

# OPERATION AND IMPORTANT RIDING POINTS

## Tips for reducing fuel consumption

EAU04755

Fuel consumption depends largely on your riding style. Consider the following tips to reduce fuel consumption:

- Avoid high engine speeds during acceleration.
- Avoid high engine speeds with no load on the engine.
- Turn the engine off instead of letting it idle for an extended length of time (e.g., in traffic jams, at traffic lights or at railroad crossings).

## Engine break-in

EAU01128

There is never a more important period in the life of your engine than the period between 0 and 1,600 km. For this reason, you should read the following material carefully.

Since the engine is brand new, do not put an excessive load on it for the first 1,600 km. The various parts in the engine wear and polish themselves to the correct operating clearances. During this period, prolonged full-throttle operation or any condition that might result in engine overheating must be avoided.

## 0 — 1,000 km

EAU03845\*

Avoid prolonged operation above 1/3 throttle.

## 1,000 — 1,600 km

Avoid prolonged operation above 1/2 throttle.

### CAUTION:

ECA00138

**After 1,000 km of operation, be sure to replace the engine oil and final transmission oil.**

## 1,600 km and beyond

The vehicle can now be operated normally.

### CAUTION:

EC000049

**If any engine trouble should occur during the engine break-in period, immediately have a Yamaha dealer check the vehicle.**

# OPERATION AND IMPORTANT RIDING POINTS

---

---

EAU00461

## Parking

When parking, stop the engine, and then remove the key from the main switch.

EW000058

### **⚠ WARNING**

- Since the engine and exhaust system can become very hot, park in a place where pedestrians or children are not likely to touch them.
- Do not park on a slope or on soft ground, otherwise the scooter may overturn.

5

EC000062

### **CAUTION:**

Never park in an area where there are fire hazards such as grass or other flammable materials.

# PERIODIC MAINTENANCE AND MINOR REPAIR

Owner's tool kit .....	6-1	Checking and lubricating the cables .....	6-26
Periodic maintenance and lubrication chart .....	6-2	Checking and lubricating the throttle grip and cables .....	6-26
Removing and installing cowlings and panels .....	6-5	Lubricating the front and rear brake levers .....	6-26
Checking the spark plug .....	6-11	Checking and lubricating the centerstand and sidestand .....	6-27
Engine oil .....	6-13	Checking the front fork .....	6-27
Final transmission oil .....	6-16	Checking the steering .....	6-28
Coolant .....	6-17	Checking the wheel bearings .....	6-29
Air filter and the V-belt case air filter elements .....	6-18	Battery .....	6-29
Adjusting the carburetor .....	6-20	Replacing the fuses .....	6-30
Adjusting the throttle cable free play .....	6-20	Replacing a headlight bulb .....	6-32
Adjusting the valve clearance .....	6-21	Replacing a front turn signal light bulb .....	6-34
Tires .....	6-21	Replacing tail/brake light bulb or rear turn signal light bulb .....	6-34
Cast wheels .....	6-23	Replacing the license plate light bulb .....	6-35
Adjusting the front and rear brake lever free play .....	6-23	Troubleshooting .....	6-35
Checking the front and rear brake pads .....	6-24	Troubleshooting charts .....	6-36
Checking the brake fluid level .....	6-24		
Changing the brake fluid .....	6-25		

# PERIODIC MAINTENANCE AND MINOR REPAIR

---

EAU00464

Safety is an obligation of the owner. Periodic inspection, adjustment and lubrication will keep your vehicle in the safest and most efficient condition possible. The most important points of inspection, adjustment, and lubrication are explained on the following pages.

The intervals given in the periodic maintenance and lubrication chart should be simply considered as a general guide under normal riding conditions. However, **DEPENDING ON THE WEATHER, TERRAIN, GEOGRAPHICAL LOCATION, AND INDIVIDUAL USE, THE MAINTENANCE INTERVALS MAY NEED TO BE SHORTENED.**

## **⚠ WARNING**

EW000060

**If you are not familiar with scooter maintenance work, have a Yamaha dealer do it for you.**

---

EAU00466  
EW000061

## **⚠ WARNING**

**This scooter is designed for use on paved roads only. If this scooter is operated in abnormally dusty, muddy or wet conditions, the air filter element should be cleaned or replaced more frequently, otherwise rapid engine wear may result. Consult a Yamaha dealer for proper maintenance intervals.**

---

EAUT0027\*

## **Owner's tool kit**

The owner's tool kit is located inside the front storage compartment A. (See page 3-12 for front storage compartment opening procedures.)

The service information included in this manual and the tools provided in the owner's tool kit are intended to assist you in the performance of preventive maintenance and minor repairs. However, additional tools such as a torque wrench may be necessary to perform certain maintenance work correctly.

## **NOTE :**

If you do not have the tools or experience required for a particular job, have a Yamaha dealer perform it for you.

---

## **⚠ WARNING**

EW000063

**Modifications not approved by Yamaha may cause loss of performance and render the vehicle unsafe for use. Consult a Yamaha dealer before attempting any changes.**

---



# PERIODIC MAINTENANCE AND MINOR REPAIR

EAU03685

## Periodic maintenance and lubrication chart

### NOTE :

- The annual checks must be performed every year, except if a kilometer-based maintenance is performed instead.
- From 50,000 km, repeat the maintenance intervals starting from 10,000 km.
- Items marked with an asterisk should be performed by a Yamaha dealer as they require special tools, data and technical skills.

NO.	ITEM	CHECK OR MAINTENANCE JOB	ODOMETER READING (x 1,000 km)					ANNUAL CHECK
			1	10	20	30	40	
1	* Fuel line	• Check fuel hoses and vacuum hose for cracks or damage.		√	√	√	√	√
2	Spark plug	• Check condition.		√		√		
		• Clean and regap.						
		• Replace.			√		√	
3	* Valves	• Check valve clearance. • Adjust.			√		√	
4	Air filter element	• Clean.		√		√		
		• Replace.			√		√	
5	V-belt case air filter element	• Clean.		√	√	√	√	
6	* Front brake	• Check operation, fluid level and vehicle for fluid leakage. (See NOTE on page 6-4.)	√	√	√	√	√	√
		• Replace brake pads.	Whenever worn to the limit					

# PERIODIC MAINTENANCE AND MINOR REPAIR

NO.	ITEM	CHECK OR MAINTENANCE JOB	ODOMETER READING (x 1,000 km)					ANNUAL CHECK	
			1	10	20	30	40		
7	*	<b>Rear brake</b>	• Check operation, fluid level and vehicle for fluid leakage. (See NOTE on page 6-4.)	√	√	√	√	√	√
			• Replace brake pads.	Whenever worn to the limit					
8	*	<b>Brake hoses</b>	• Check for cracks or damage.		√	√	√	√	√
			• Replace. (See NOTE on page 6-4.)	Every 4 years					
9	*	<b>Wheels</b>	• Check runout and for damage.		√	√	√	√	
10	*	<b>Tires</b>	• Check tread depth and for damage. • Replace if necessary. • Check air pressure. • Correct if necessary.		√	√	√	√	√
11	*	<b>Wheel bearings</b>	• Check bearing for looseness or damage.		√	√	√	√	
12	*	<b>Steering bearings</b>	• Check bearing play and steering for roughness.	√	√	√	√	√	
			• Lubricate with lithium-soap-based grease.	Every 20,000 km					
13	*	<b>Chassis fasteners</b>	• Make sure that all nuts, bolts and screws are properly tightened.		√	√	√	√	√
14		<b>Sidestand, Centerstand</b>	• Check operation. • Lubricate.		√	√	√	√	√
15	*	<b>Sidestand switch</b>	• Check operation.	√	√	√	√	√	√
16	*	<b>Front fork</b>	• Check operation and for oil leakage.		√	√	√	√	
17	*	<b>Shock absorber assemblies</b>	• Check operation and shock absorbers for oil leakage.		√	√	√	√	
18	*	<b>Carburetor</b>	• Adjust engine idling speed.	√	√	√	√	√	√

# PERIODIC MAINTENANCE AND MINOR REPAIR

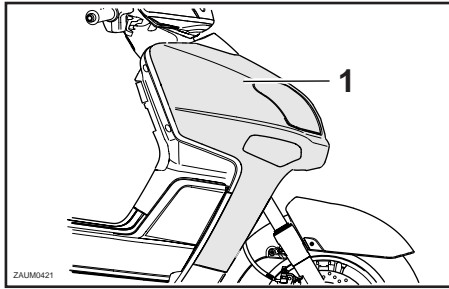
NO.	ITEM	CHECK OR MAINTENANCE JOB	ODOMETER READING (x 1,000 km)					ANNUAL CHECK
			1	10	20	30	40	
19	Engine oil	• Change. (See page 3-7 for more information about the oil change indicator)	√	When the oil change indicator comes on ( Every 3000 km)				
		• Check oil level and vehicle for oil leakage.	Every 3,000 km					√
20	* Engine oil strainer	• Clean.	√					
21	* Cooling system	• Check coolant level and vehicle for coolant leakage.		√	√	√	√	√
		• Change.	Every 3 years					
22	Final transmission oil	• Check vehicle for oil leakage.	√	√		√		
		• Change.	√		√		√	
23	* V-belt	• Replace.	Every 20,000 km					
24	* Front and rear brake switches	• Check operation.	√	√	√	√	√	√
25	Moving parts and cables	• Lubricate.		√	√	√	√	√
26	* Throttle grip housing and cable	• Check operation and free play. • Adjust the throttle cable free play if necessary. • Lubricate the throttle grip housing and cable.		√	√	√	√	√
27	* Lights, signals and switches	• Check operation. • Adjust headlight beam.	√	√	√	√	√	√

EAU03884\*

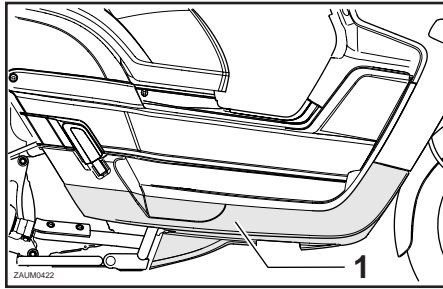
## NOTE :

- The air filter needs more frequent service if you are riding in unusually wet or dusty areas.
- Hydraulic brake service
  - Regularly check and, if necessary, correct the brake fluid level.
  - Every two years change the brake fluid.
  - Replace the brake hoses every four years and if cracked or damaged.

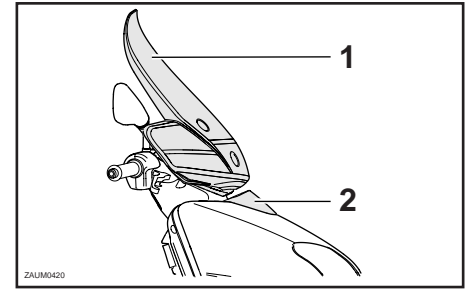
# PERIODIC MAINTENANCE AND MINOR REPAIR



1. Cowling A



1. Cowling B



1. Windshield  
2. Panel A

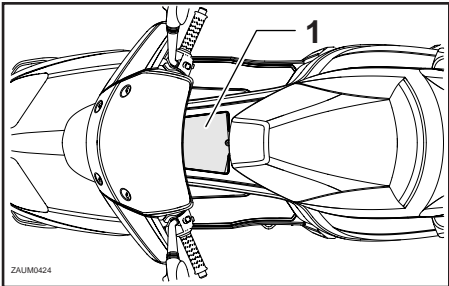
EAU01139

## Removing and installing cowlings and panels

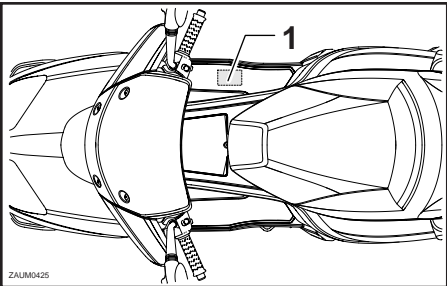
The cowlings and panels shown above need to be removed to perform some of the maintenance jobs described in this chapter. Refer to this section each time a cowling or panel needs to be removed and installed.

6

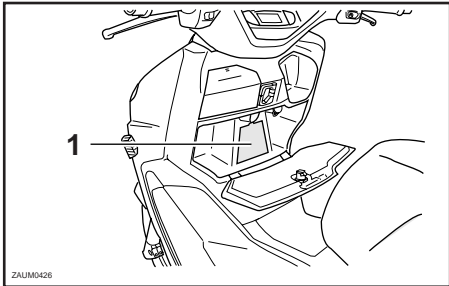
# PERIODIC MAINTENANCE AND MINOR REPAIR



1. Panel B

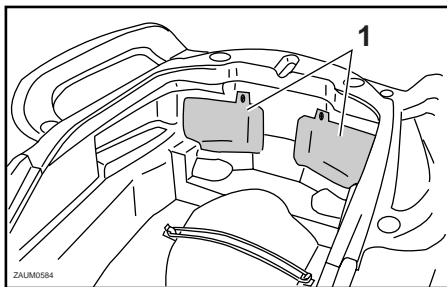


1. Panel C

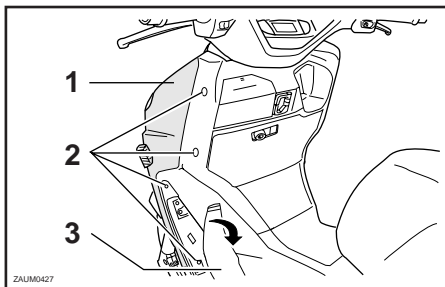


1. Panel D

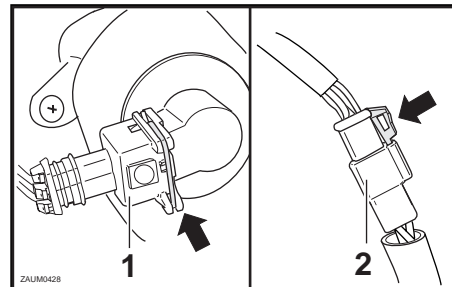
# PERIODIC MAINTENANCE AND MINOR REPAIR



1. Panel E



1. Cowling A
2. Screw (x 8)
3. Floorboard mat (x2)



1. Turn signal lead coupler
2. Headlight coupler

4. Disconnect the headlight coupler and the turn signal lead coupler.
5. Pull the cowling off.

## Cowling A

EAUM0105\*

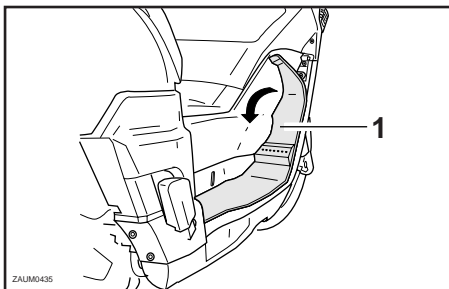
### To remove the cowling

1. Pull up the floorboard mat on each side of the scooter.
2. Remove panel A. (See page 6-9 for removal and installation procedures.)
3. Remove the cowling screws.

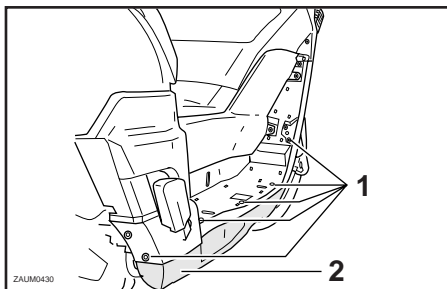
### To install the cowling

1. Connect the headlight coupler, and the turn signal lead coupler.
2. Place the cowling in the original position, and then install the screws.
3. Install panel A.
4. Place the floorboard mats in their original position.

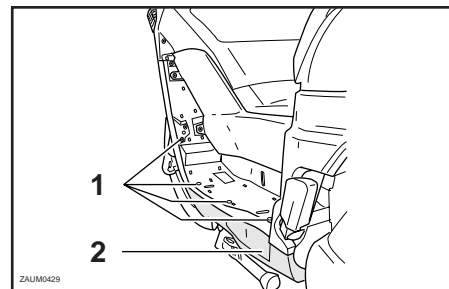
# PERIODIC MAINTENANCE AND MINOR REPAIR



1. Floorboard mat (x2)



1. Screw (x5)
2. Cowling B



1. Screw (x 4)
2. Cowling B

## Cowling B

EAUM0106

### To remove the cowling

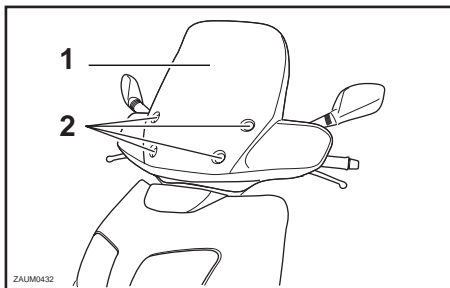
1. Pull up the floorboard mat on each side of the scooter.

2. Remove the screws on each side of scooter, and then take the cowling off.

### To install the cowling

1. Place the cowling in the original position, and then install the screws.
2. Place the floorboard mats in their original position.

# PERIODIC MAINTENANCE AND MINOR REPAIR



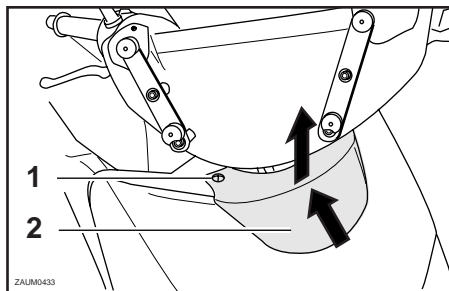
1. Windshield
2. Screw (x4)

EAUM0108

## Panel A

### To remove the panel

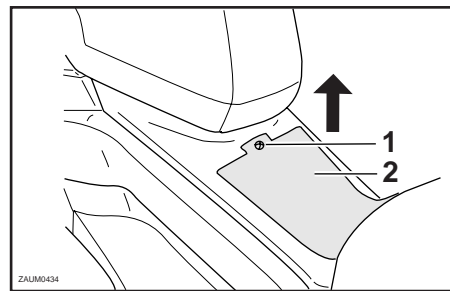
1. Remove the screws, and then take the windshield off.



1. Screw (x2)
2. Panel A

### To install the panel

1. Place the panel in the original position, and then install the screws.
2. Place the windshield in the original position, and then install the screws.



1. Screw (x1)
2. Panel B

EAU01535

## Panel B

### To remove the panel

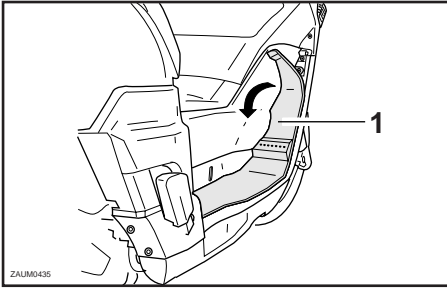
Remove the screw, and then pull the panel off as shown.

### To install the panel

Place the panel in the original position, and then install the screw.



# PERIODIC MAINTENANCE AND MINOR REPAIR



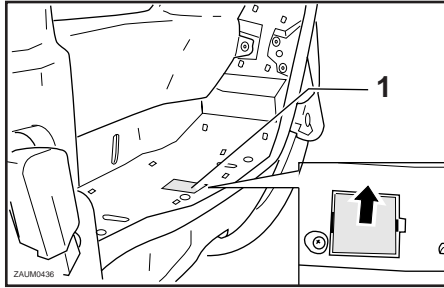
1. Floorboard mat

EAUM0109

## Panel C

### To remove the panel

1. Pull up the right floorboard mat.

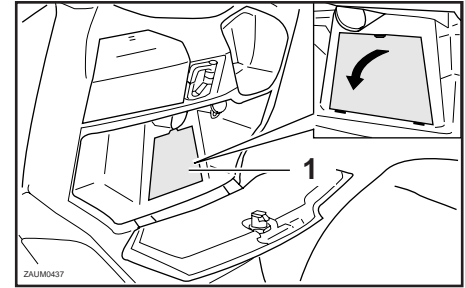


1. Panel C

2. Remove the panel as shown.

### To install the panel

1. Place the panel in the original position.
2. Place the floorboard mat in the original position.



1. Panel D

EAU00494

## Panel D

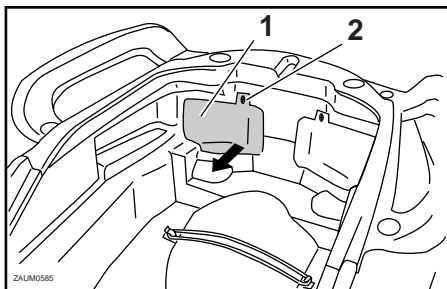
### To remove the panel

Pull the panel off as shown.

### To install the panel

Place the panel in the original position.

# PERIODIC MAINTENANCE AND MINOR REPAIR



1. Panel E
2. Screw

EAU01535

## Panel E

### To remove the panel

Remove the screw, and then pull the panel off as shown.

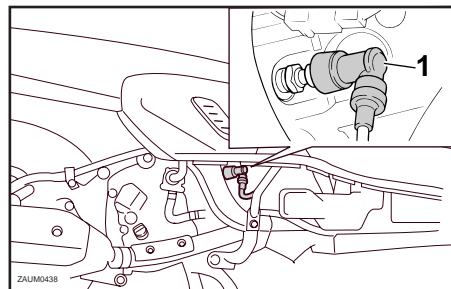
### To install the panel

Place the panel in the original position, and then install the screw.

EAU03620

## Checking the spark plug

The spark plug is an important engine component, which is easy to check. Since heat and deposits will cause any spark plug to slowly erode, the spark plug should be removed and checked in accordance with the periodic maintenance and lubrication chart. In addition, the condition of the spark plug can reveal the condition of the engine.

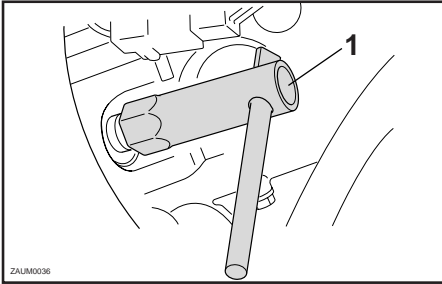


1. Spark plug

## To remove the spark plug

1. Remove cowling B. (See page 6-8 for cowling removal and installation procedures.)
2. Remove the spark plug cap.

# PERIODIC MAINTENANCE AND MINOR REPAIR



1. Spark plug wrench

3. Remove the spark plug as shown, with the spark plug wrench included in the owner's tool kit.

## To check the spark plug

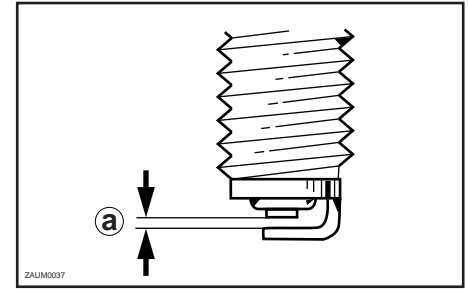
1. Check that the porcelain insulator around the center electrode of the spark plug is a medium-to-light tan (the ideal color when the scooter is ridden normally).

### NOTE :

If the spark plug shows a distinctly different color, the engine could be defective. Do not attempt to diagnose such problems yourself. Instead, have a Yamaha dealer check the scooter.

2. Check the spark plug for electrode erosion and excessive carbon or other deposits, and replace it if necessary.

Specified spark plug:  
DR8EA (NGK)



a. Spark plug gap

## To install the spark plug

1. Measure the spark plug gap with a wire thickness gauge and, if necessary, adjust the gap to specification.

Spark plug gap:  
0.6 – 0.7 mm

2. Clean the surface of the spark plug gasket and its mating surface, and then wipe off any grime from the spark plug threads.
3. Install the spark plug with the spark plug wrench, and then tighten it to the specified torque.

# PERIODIC MAINTENANCE AND MINOR REPAIR

---

Tightening torque:  
Spark plug:  
17.5 Nm (1.75 m•kg)

**NOTE :** \_\_\_\_\_

If a torque wrench is not available when installing a spark plug, a good estimate of the correct torque is 1/4 – 1/2 turn past finger tight. However, the spark plug should be tightened to the specified torque as soon as possible.

---

4. Install the spark plug cap.
5. Install the cowling.

EAUM0103\*

## Engine oil

The engine oil level should be checked before each ride. In addition, the oil must be changed at the intervals specified in the periodic maintenance and lubrication chart and when the oil change indicator comes on.

## To check the engine oil level

1. Place the scooter on the centerstand.

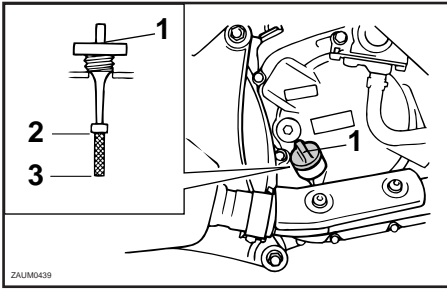
**NOTE :** \_\_\_\_\_

Make sure that the scooter is positioned straight up when checking the oil level. A slight tilt to the side can result in a false reading.

---

2. Start the engine, warm it up for several minutes, and then turn it off.

# PERIODIC MAINTENANCE AND MINOR REPAIR



1. Engine oil filler cap
2. Maximum level mark
3. Minimum level mark

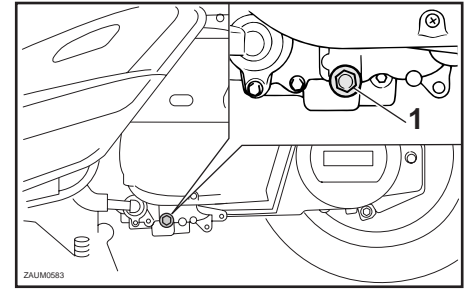
3. Wait a few minutes until the oil settles, remove the oil filler cap, wipe the dipstick clean, insert it back into the oil filler hole (without screwing it in), and then remove it again to check the oil level.

## NOTE : \_\_\_\_\_

The engine oil should be between the minimum and maximum level marks.

---

4. If the engine oil is below the minimum level mark, add sufficient oil of the recommended type to raise it to the correct level.
5. Insert the dipstick into the oil filler hole, and then tighten the oil filler cap.

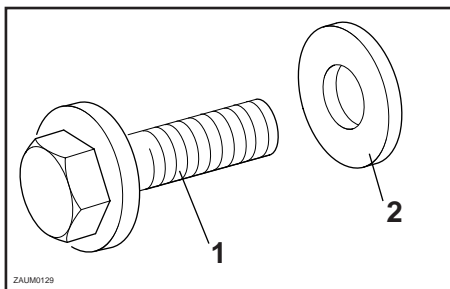


1. Engine oil drain bolt

## To change the engine oil

1. Start the engine, warm it up for several minutes, and then turn it off.
2. Place an oil pan under the engine to collect the used oil.
3. Remove the engine oil filler cap and the engine oil drain bolt to drain the oil from the crankcase.

# PERIODIC MAINTENANCE AND MINOR REPAIR



1. Engine oil drain bolt
2. Washer

4. Check the washer for damage and replace it if necessary.
5. Install the washer and the engine oil drain bolt, and then tighten the drain bolt to the specified torque.

Tightening torque:  
Engine oil drain bolt:  
20 Nm (2.0 m·kgf)

**NOTE :** \_\_\_\_\_  
Make sure that the washer is properly seated.

6. Add the specified amount of the recommended engine oil, and then install and tighten the oil filler cap.

Recommended engine oil:

See page 8-1.

Oil quantity:

Periodic oil change:

1.2 L

Total amount (dry engine):

1.4 L

ECA00140

## **CAUTION:** \_\_\_\_\_

- Do not use oils with a diesel specification of "CD" or oils of a higher quality than specified. In addition, do not use oils labeled "ENERGY CONSERVING II" or higher.
- Be sure no foreign material enters the crankcase.

7. Start the engine, and then let it idle for several minutes while checking it for oil leakage. If oil is leaking, immediately turn the engine off and check for the cause.
8. Reset the oil change indicator. (See page 3-7 for details.)

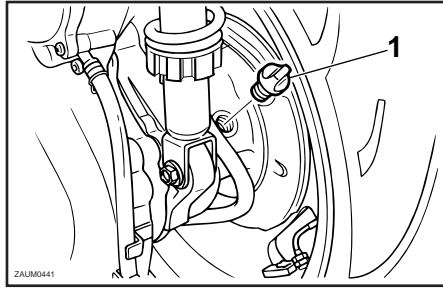
# PERIODIC MAINTENANCE AND MINOR REPAIR

EAU04228

## Final transmission oil

The final transmission case must be checked for oil leakage before each ride. If any leakage is found, have a Yamaha dealer check and repair the scooter. In addition, the final transmission oil must be changed as follows at the intervals specified in the periodic maintenance and lubrication chart.

1. Start the engine, warm it up by riding the scooter for several minutes, and then stop the engine.
2. Place the scooter on the centerstand.
3. Place an oil pan under the final transmission case to collect the used oil.



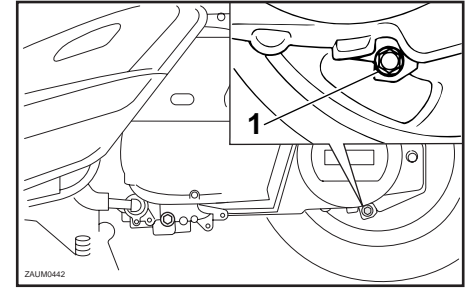
1. Final transmission oil filler cap

4. Remove the oil filler cap and drain bolt to drain the oil from the final transmission case.
5. Install the final transmission oil drain bolt, and then tighten it to the specified torque.

Tightening torque:

Final transmission oil drain bolt:  
22 Nm (2.2 m·kgf)

6. Add the specified amount of the recommended final transmission oil, and then install and tighten the oil filler cap.



1. Final transmission oil drain bolt

Recommended final transmission oil:

See page 8-2.

Oil quantity:  
0.25 L

### **⚠ WARNING**

- **Make sure that no foreign material enters the final transmission case.**
- **Make sure that no oil gets on the tire or wheel.**

7. Check the final transmission case for oil leakage. If oil is leaking, check for the cause.

EWA00062

# PERIODIC MAINTENANCE AND MINOR REPAIR

EAU04591\*

## Coolant

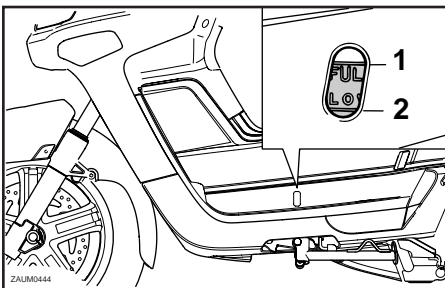
The coolant reservoir is located under the panel B. (See page 6-9 for panel removal and installation procedures.)

### To check the coolant level

1. Place the scooter on a level surface and hold it in an upright position.

### NOTE : \_\_\_\_\_

- The coolant level must be checked on a cold engine since the level varies with engine temperature.
- Make sure that the scooter is positioned straight up when checking the coolant level. A slight tilt to the side can result in a false reading.

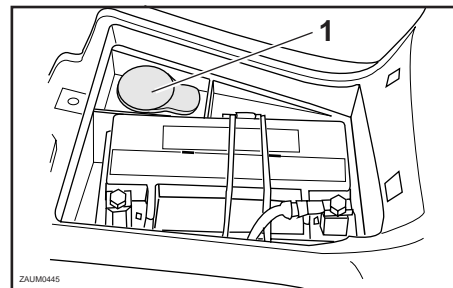


1. Maximum level mark
2. Minimum level mark

2. Check the coolant level in the coolant reservoir.

### NOTE : \_\_\_\_\_

The coolant should be between the minimum and maximum level marks.



1. Coolant reservoir cap

3. If the coolant is at or below the minimum level mark, remove the reservoir cap, add coolant to the maximum level mark, and then install the reservoir cap.

Coolant reservoir capacity:  
0.4 L

4. Install the panel.



# PERIODIC MAINTENANCE AND MINOR REPAIR

## CAUTION:

EC000080

- If coolant is not available, use distilled water or soft tap water instead. Do not use hard water or salt water since it is harmful to the engine.
- If water has been used instead of coolant, replace it with coolant as soon as possible, otherwise the engine may not be sufficiently cooled and the cooling system will not be protected against frost and corrosion.
- If water has been added to the coolant, have a Yamaha dealer check the antifreeze content of the coolant as soon as possible, otherwise the effectiveness of the coolant will be reduced.

## NOTE :

The radiator fan is automatically switched on or off according to the coolant temperature in the radiator. If the engine overheats, see page 6-37 for further instructions.

## Air filter and V-belt case air filter elements

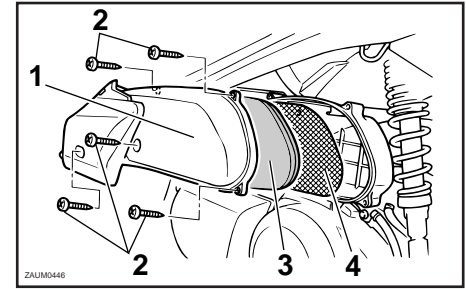
EAU03627\*

The air filter and V-belt case air filter elements should be cleaned at the intervals specified in the periodic maintenance and lubrication chart. Clean both filter elements more frequently if you are riding in unusually wet or dusty areas.

## CAUTION:

EC000092\*

- Make sure that each filter element is properly seated in its case.
- The engine should never be operated without the filter elements installed, otherwise the piston and/or cylinder may become excessively worn.

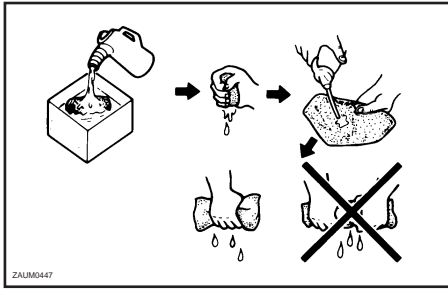


1. Air filter case cover
2. Screw (x5)
3. Sponge material
4. Mesh sheet

## Cleaning the air filter element

1. Place the scooter on the centerstand.
2. Remove the air filter case cover by removing the screws.

# PERIODIC MAINTENANCE AND MINOR REPAIR

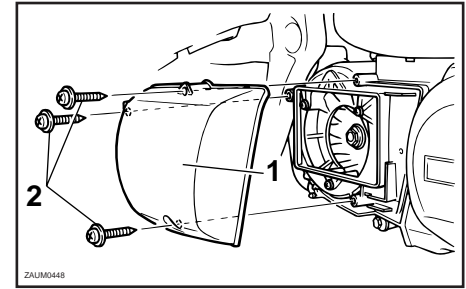


3. Pull the sponge material out along with the mesh sheet, clean it with solvent, and then squeeze the remaining solvent out.
4. Check the sponge material for damage and replace it if necessary.
5. Allow the sponge material to dry.
6. Apply oil of the recommended type to the entire surface of the sponge material, and then squeeze the excess oil out.

**NOTE :** \_\_\_\_\_  
The sponge material should be wet but not dripping.

Recommended oil:  
Engine oil

7. Insert the sponge material into the air filter case.
8. Install the air filter case cover by installing the screws.

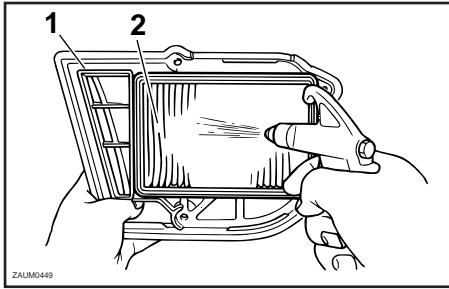


1. V-belt case air filter cover
2. Screw (x3)

## Cleaning the V-belt case air filter element

1. Remove the V-belt case air filter cover by removing the screws.

# PERIODIC MAINTENANCE AND MINOR REPAIR



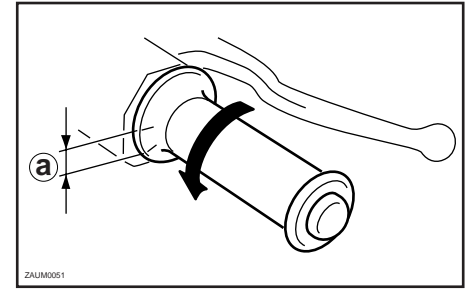
1. V-belt case air filter cover
2. V-belt case air filter element

2. Blow the dirt out of the air filter element with compressed air as shown.
3. Check the V-belt case air filter element for damage and replace it if necessary.
4. Install the V-belt case air filter element cover by installing the screws.

EAU00631

## Adjusting the carburetor

The carburetor is an important part of the engine and requires very sophisticated adjustment. Therefore, all carburetor adjustments should be left to a Yamaha dealer, who has the necessary professional knowledge and experience.



- a. Throttle cable free play

EAU00635

## Adjusting the throttle cable free play

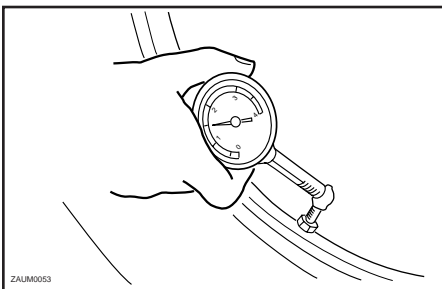
The throttle cable free play should measure 1.5 – 3 mm at the throttle grip. Periodically check the throttle cable free play and, if necessary, have a Yamaha dealer adjust it.

# PERIODIC MAINTENANCE AND MINOR REPAIR

## Adjusting the valve clearance

EAU00637

The valve clearance changes with use, resulting in improper air-fuel mixture and/or engine noise. To prevent this from occurring, the valve clearance must be adjusted by a Yamaha dealer at the intervals specified in the periodic maintenance and lubrication chart.



EAU04551\*

## Tires

To maximize the performance, durability, and safe operation of your scooter, note the following points regarding the specified tires.

### Tire air pressure

The tire air pressure should be checked and, if necessary, adjusted before each ride.

## ⚠ WARNING

EW000082

- The tire air pressure must be checked and adjusted on cold tires (i.e., when the temperature of the tires equals the ambient temperature).
- The tire air pressure must be adjusted in accordance with the riding speed and with the total weight of rider, passenger, cargo, and accessories approved for this model.

Tire air pressure (measured on cold tires)		
Load*	Front	Rear
Up to 90 kg*	180 kPa 1.8 kgf/cm <sup>2</sup> 1.8 bar	190 kPa 1.9 kgf/cm <sup>2</sup> 1.9 bar
90 kg ~ 160 kg load*	180 kPa 1.8 kgf/cm <sup>2</sup> 1.8 bar	200 kPa 2.0 kgf/cm <sup>2</sup> 2.0 bar
160 kg ~ maximum load*	190 kPa 1.9 kgf/cm <sup>2</sup> 1.9 bar	220 kPa 2.2 kgf/cm <sup>2</sup> 2.2 bar

Maximum load*	202 kg
---------------	--------

\* Total weight of rider, passenger, cargo and accessories

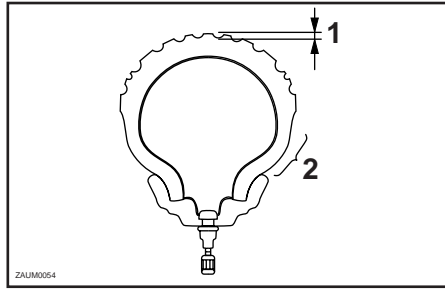
# PERIODIC MAINTENANCE AND MINOR REPAIR

## ⚠️ WARNING

EW000077

Because loading has an enormous impact on the handling, braking, performance and safety characteristics of your scooter, you should keep the following precautions in mind.

- **NEVER OVERLOAD THE SCOOTER!** Operation of an overloaded scooter may result in tire damage, loss of control, or severe injury. Make sure that the total weight of rider, cargo, and accessories does not exceed the specified maximum load for the vehicle.
- Do not carry along loosely packed items, which can shift during a ride.
- Securely pack the heaviest items close to the center of the scooter and distribute the weight evenly on both sides.
- Adjust the suspension and tire air pressure with regard to the load.
- Check the tire condition and air pressure before each ride.



1. Tire tread depth
2. Sidewall

## Tire inspection

The tires must be checked before each ride. If the center tread depth reaches the specified limit, if the tire has a nail or glass fragments in it, or if the sidewall is cracked, have a Yamaha dealer replace the tire immediately.

Minimum tire tread depth (front and rear)	1.6 mm
---	--------

## NOTE :

The tire tread depth limits may differ from country to country. Always comply with the local regulations.

## Tire information

This scooter is equipped with tubeless tires.

### Front

Manufacturer	Size	Type
MICHELIN	120/80-14 58P	PILOT CITY TL

### Rear

Manufacturer	Size	Type
MICHELIN	150/70-14 66P	PILOT CITY TL

EAU00683  
EW000079

## ⚠️ WARNING

- **Have a Yamaha dealer replace excessively worn tires. Besides being illegal, operating the scooter with excessively worn tires decreases riding stability and can lead to loss of control.**
- **The replacement of all wheel and brake related parts, including the tires, should be left to a Yamaha dealer, who has the necessary professional knowledge and experience.**

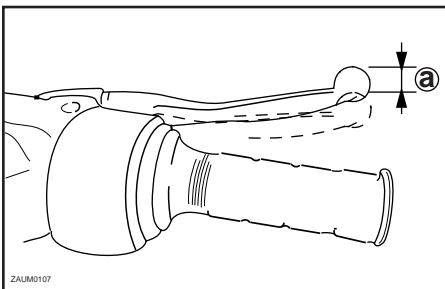
# PERIODIC MAINTENANCE AND MINOR REPAIR

## Cast wheels

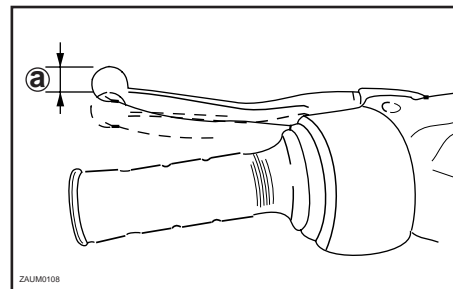
EAU03773

To maximize the performance, durability, and safe operation of your scooter, note the following points regarding the specified wheels.

- The wheel rims should be checked for cracks, bends or warpage before each ride. If any damage is found, have a Yamaha dealer replace the wheel. Do not attempt even the smallest repair to the wheel. A deformed or cracked wheel must be replaced.
- The wheel should be balanced whenever either the tire or wheel has been changed or replaced. An unbalanced wheel can result in poor performance, adverse handling characteristics, and a shortened tire life.
- Ride at moderate speeds after changing a tire since the tire surface must first be "broken in" for it to develop its optimal characteristics.



a. Front brake free play



a. Rear brake free play

EAUM0056

## Adjusting the front and rear brake lever free play

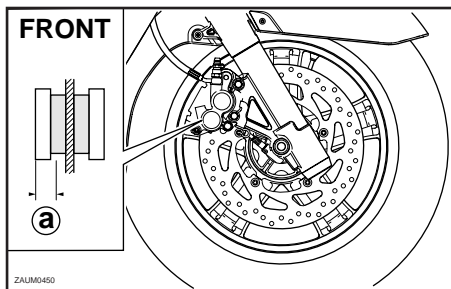
The front and rear brake lever free play should measure 2 — 5 mm as shown. Periodically check the front and rear brake lever free play and, if necessary, have a Yamaha dealer adjust it.

EW000100

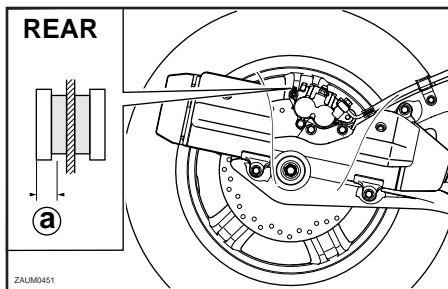
### **⚠ WARNING**

**An incorrect brake lever free play indicates a hazardous condition in the brake system. Do not operate the scooter until the brake system has been checked or repaired by a Yamaha dealer.**

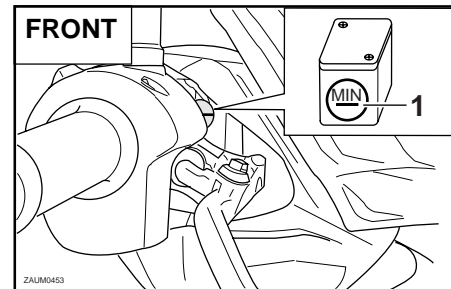
# PERIODIC MAINTENANCE AND MINOR REPAIR



a. Wear limit



a. Wear limit



1. Minimum level mark

EAU00717

## Checking the front and rear brake pads

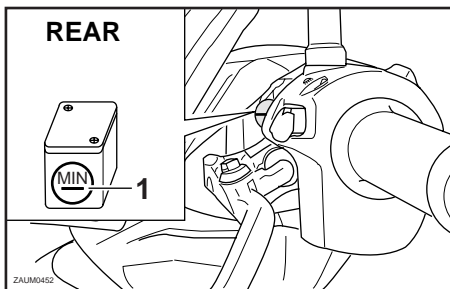
The front and rear brake pads must be checked for wear at the intervals specified in the periodic maintenance and lubrication chart. To check the brake pad wear, measure the lining thickness. If the lining thickness is less than 3.8 mm, have a Yamaha dealer replace the brake pads as a set.

EAU04856

## Checking the brake fluid level

Insufficient brake fluid may allow air to enter the brake system, possibly causing it to become ineffective. Before riding, check that the brake fluid is above the minimum level mark and replenish if necessary. A low brake fluid level may indicate worn brake pads and/or brake system leakage. If the brake fluid level is low, be sure to check the brake pads for wear and the brake system for leakage.

# PERIODIC MAINTENANCE AND MINOR REPAIR



1. Minimum level mark

Observe these precautions:

- When checking the fluid level, make sure that the top of the brake fluid reservoir is level.
- Use only the recommended quality brake fluid, otherwise the rubber seals may deteriorate, causing leakage and poor braking performance.

Recommended brake fluid:  
DOT 4

- Refill with the same type of brake fluid. Mixing fluids may result in a harmful chemical reaction and lead to poor braking performance.
- Be careful that water does not enter the brake fluid reservoir when refilling. Water will significantly lower the boiling point of the fluid and may result in vapor lock.
- Brake fluid may deteriorate painted surfaces or plastic parts. Always clean up spilled fluid immediately.
- As the brake pads wear, it is normal for the brake fluid level to gradually go down. However, if the brake fluid level goes down suddenly, have a Yamaha dealer check the cause.

EAUM0008\*

## Changing the brake fluid

Have a Yamaha dealer change the brake fluid at the intervals specified in the periodic maintenance and lubrication chart. In addition, have the brake hoses replaced every four years or whenever they are damaged or leaking.



# PERIODIC MAINTENANCE AND MINOR REPAIR

## Checking and lubricating the cables

EAU02962

The operation of all control cables and the condition of the cables should be checked before each ride, and the cables and cable ends should be lubricated if necessary. If a cable is damaged or does not move smoothly, have a Yamaha dealer check or replace it.

Recommended lubricant:  
Engine oil

### **⚠ WARNING**

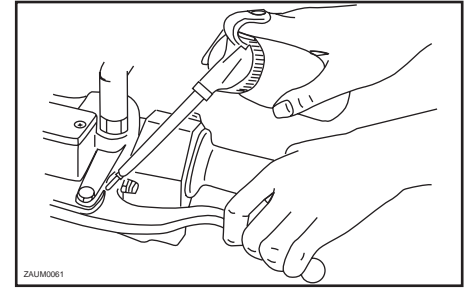
EW000112

**Damage to the outer sheath may interfere with proper cable operation and will cause the inner cable to rust. Replace a damaged cable as soon as possible to prevent unsafe conditions.**

## Checking and lubricating the throttle grip and cable

EAU04034

The operation of the throttle grip should be checked before each ride. In addition, the cable should be lubricated or replaced at the intervals specified in the periodic maintenance chart.



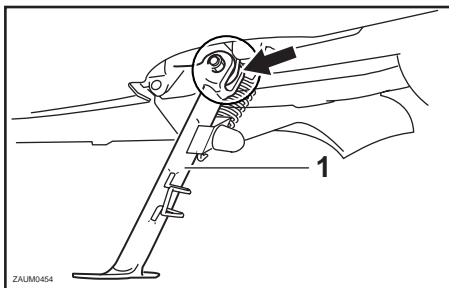
## Lubricating the front and rear brake levers

EAU03118

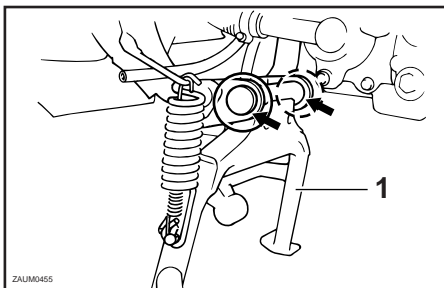
The pivoting points of the front and rear brake levers must be lubricated at the intervals specified in the periodic maintenance and lubrication chart.

Recommended lubricant:  
Lithium-soap-based grease  
(all-purpose grease)

# PERIODIC MAINTENANCE AND MINOR REPAIR



1. Sidestand



1. Centerstand

EAU03371

## Checking and lubricating the centerstand and sidestand

The operation of the centerstand and sidestand should be checked before each ride, and the pivots and metal-to-metal contact surfaces should be lubricated if necessary.

### **⚠WARNING**

EW000114

If the centerstand or sidestand does not move up and down smoothly, have a Yamaha dealer check or repair it.

EAU02939

## Checking the front fork

The condition and operation of the front fork must be checked as follows at the intervals specified in the periodic maintenance and lubrication chart.

### To check the condition

#### **⚠WARNING**

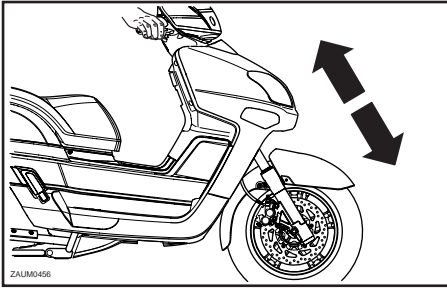
EW000115

**Securely support the scooter so that there is no danger of it falling over.**

Check the inner tubes for scratches, damage and excessive oil leakage.

Recommended lubricant:  
Lithium-soap-based grease  
(all-purpose grease)

# PERIODIC MAINTENANCE AND MINOR REPAIR



EAU00794

## Checking the steering

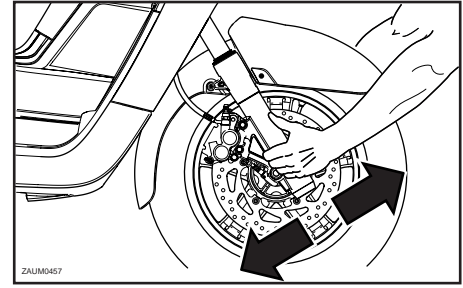
Worn or loose steering bearings may cause danger. Therefore, the operation of the steering must be checked as follows at the intervals specified in the periodic maintenance and lubrication chart.

1. Place a stand under the engine to raise the front wheel off the ground.

### **⚠ WARNING**

EW000115

**Securely support the scooter so that there is no danger of it falling over.**



2. Hold the lower ends of the front fork legs and try to move them forward and backward. If any free play can be felt, have a Yamaha dealer check or repair the steering.

## To check the operation

1. Place the scooter on a level surface and hold it in an upright position.
2. While applying the front brake, push down hard on the handlebars several times to check if the front fork compresses and rebounds smoothly.

EC000098

### **CAUTION:**

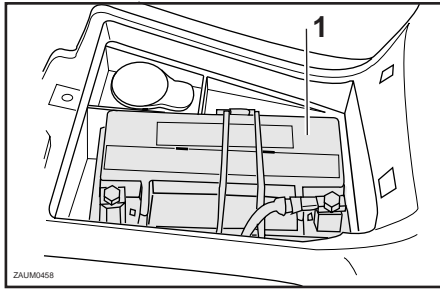
**If any damage is found or the front fork does not operate smoothly, have a Yamaha dealer check or repair it.**

# PERIODIC MAINTENANCE AND MINOR REPAIR

## Checking the wheel bearings

EAU01144

The front and rear wheel bearings must be checked at the intervals specified in the periodic maintenance and lubrication chart. If there is play in the wheel hub or if the wheel does not turn smoothly, have a Yamaha dealer check the wheel bearings.



1. Battery

EAU04464

## Battery

The battery is located behind panel B. (See page 6-9 for panel removal and installation procedures.)

This scooter is equipped with a sealed-type (MF) battery, which does not require any maintenance. There is no need to check the electrolyte or to add distilled water.

## To charge the battery

Have a Yamaha dealer charge the battery as soon as possible if it seems to have discharged. Keep in mind that the battery tends to discharge more quickly if the scooter is equipped with optional electrical accessories.

### **⚠ WARNING**

EW000116

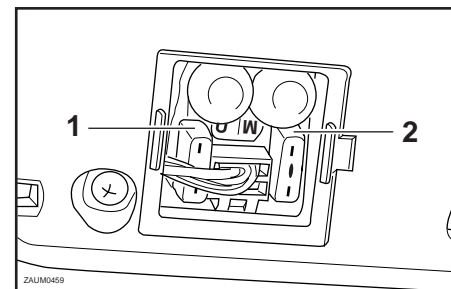
- **Electrolyte is poisonous and dangerous since it contains sulfuric acid, which causes severe burns. Avoid any contact with skin, eyes or clothing and always shield your eyes when working near batteries. In case of contact, administer the following FIRST AID.**
  - **EXTERNAL:** Flush with plenty of water.
  - **INTERNAL:** Drink large quantities of water or milk and immediately call a physician.

# PERIODIC MAINTENANCE AND MINOR REPAIR

- **EYES:** Flush with water for 15 minutes and seek prompt medical attention.
- **Batteries produce explosive hydrogen gas. Therefore, keep sparks, flames, cigarettes, etc., away from the battery and provide sufficient ventilation when charging it in an enclosed space.**
- **KEEP THIS AND ALL BATTERIES OUT OF THE REACH OF CHILDREN.**

## To store the battery

1. If the scooter will not be used for more than one month, remove the battery, fully charge it, and then place it in a cool, dry place.
2. If the battery will be stored for more than two months, check it at least once a month and fully charge it if necessary.
3. Fully charge the battery before installation.



1. Main fuse
2. Spare fuse

EAUM0110

## CAUTION:

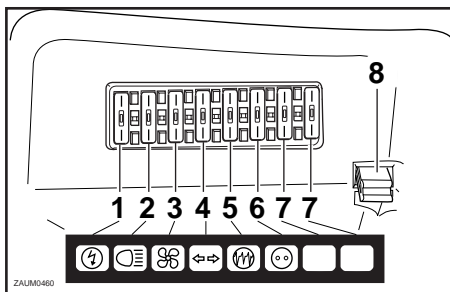
EC000102

- **Always keep the battery charged. Storing a discharged battery can cause permanent battery damage.**
- **To charge a sealed-type (MF) battery, a special (constant-voltage) battery charger is required. Using a conventional battery charger will damage the battery. If you do not have access to a sealed-type (MF) battery charger, have a Yamaha dealer charge your battery.**

## Replacing the fuses

The main fuse box is located behind panel C. (See page 6-10 for panel removal and installation procedures.)

# PERIODIC MAINTENANCE AND MINOR REPAIR



1. Backup fuse
2. Headlight fuse
3. Radiator fan fuse
4. Signaling system fuse
5. Ignition fuse
6. Auxiliary DC jack fuse
7. Spare fuse (x2)
8. Fuse tongs

The fuse block, which contains the fuses for the individual circuits, is located in the storage compartment A. (See page 3-12 for storage compartment opening and closing procedures.)

If a fuse is blown, replace it as follows.

1. Turn the key to "OFF" and turn off the electrical circuit in question.
2. Remove the blown fuse, and then install a new fuse of the specified amperage.

3. Turn the key to "ON" and turn on the electrical circuit in question to check if the device operates.
4. If the fuse immediately blows again, have a Yamaha dealer check the electrical system.

## Specified fuses:

### Main fuse Box

Main fuse: 30 A

### Fuse block

Backup fuse 3 A

Headlight fuse: 15 A

Radiator fan fuse: 15 A

Signaling system fuse: 15 A

Ignition fuse: 7.5 A

Auxiliary DC jack fuse: 3 A

EC000103

## CAUTION:

**Do not use a fuse of a higher amperage rating than recommended to avoid causing extensive damage to the electrical system and possibly a fire.**

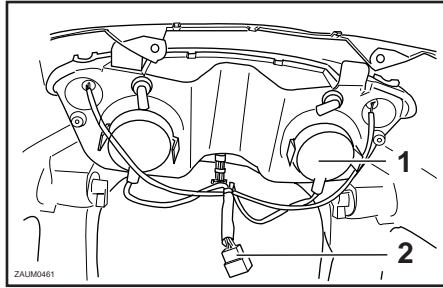
# PERIODIC MAINTENANCE AND MINOR REPAIR

EAU04285

## Replacing the headlight bulb

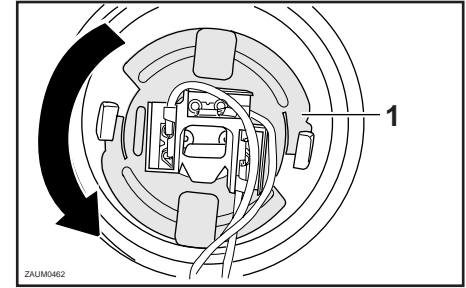
This scooter is equipped with a quartz bulb headlight. If the headlight bulb burns out, replace it as follows.

1. Remove cowling A together with the headlight unit. (See page 6-7 for cowling removal and installation procedures.)



1. Bulb cover
2. Headlight coupler

2. Disconnect the headlight coupler, and then remove the bulb cover.



1. Headlight bulb holder

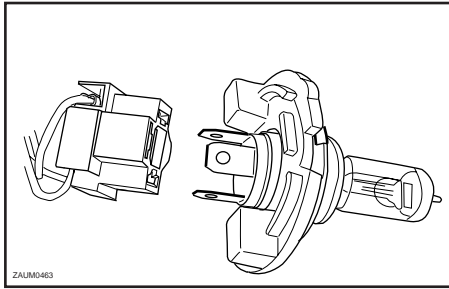
3. Remove the headlight bulb holder by pushing it inward and turning it counterclockwise, and then remove the defective bulb.

### **⚠ WARNING**

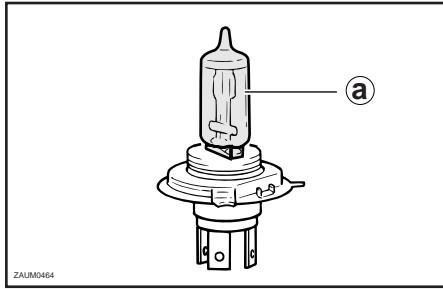
EW000119

**Headlight bulbs get very hot. Therefore, keep flammable products away from a lit headlight bulb, and do not touch the bulb until it has cooled down.**

# PERIODIC MAINTENANCE AND MINOR REPAIR



4. Place a new headlight bulb into position, and then secure it with the bulb holder.



- a. Do not touch the glass part of the bulb

EC000105

## CAUTION:

**Do not touch the glass part of the headlight bulb to keep it free from oil, otherwise the transparency of the glass, the luminosity of the bulb, and the bulb life will be adversely affected. Thoroughly clean off any dirt and fingerprints on the headlight bulb using a cloth moistened with alcohol or thinner.**

5. Install the headlight bulb cover, and then connect the coupler.
6. Install the cowling together with the headlight unit.

7. Have a Yamaha dealer adjust the headlight beam if necessary.

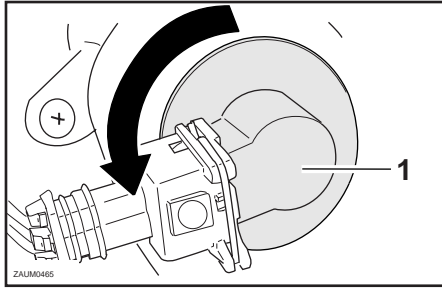


# PERIODIC MAINTENANCE AND MINOR REPAIR

## Replacing a front turn signal light bulb

EAUT0022\*

1. Place the scooter on the centerstand.
2. Remove cowling A. (See page 6-7 for cowling removal and installation procedures.)



1. Turn signal socket (x2)

3. Remove the socket (together with the bulb) by turning it counterclockwise.
4. Remove the defective bulb by pushing it in and turning it counterclockwise.
5. Insert a new bulb into the socket, push it in, and then turn it clockwise until it stops.
6. Install the socket (together with the bulb) by turning it clockwise.
7. Install the cowling.

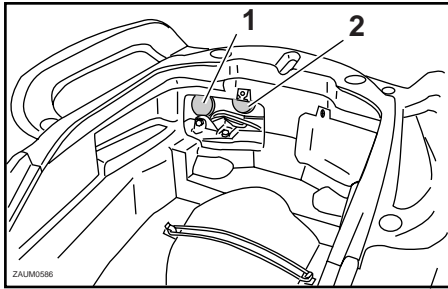
## Replacing the tail/brake light bulb or a rear turn signal light bulb

EAUT0021\*

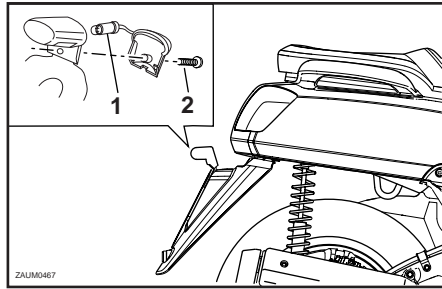
1. Place the scooter on the centerstand.
2. Remove panel E. (See page 6-11 for panel removal and installation procedures.)

# PERIODIC MAINTENANCE AND MINOR REPAIR

EAU03087



1. Turn signal socket (x2)
2. Tail/brake socket (x2)



1. Bulb socket
2. Screw

EAUM0062

## Replacing the license plate light bulb

1. Remove the license plate light cover by removing the screw.
2. Remove the socket (together with the bulb) by pulling it out.
3. Remove the defective bulb by pulling it out.
4. Insert a new bulb into the socket.
5. Install the socket (together with the bulb) by pushing it in.
6. Install the license plate light cover by installing the screw.

## Troubleshooting

Although Yamaha scooters receive a thorough inspection before shipment from the factory, trouble may occur during operation. Any problem in the fuel, compression, or ignition systems, for example, can cause poor starting and loss of power.

The following troubleshooting charts represent quick and easy procedures for checking these vital systems yourself. However, should your scooter require any repair, take it to a Yamaha dealer, whose skilled technicians have the necessary tools, experience, and know-how to service the scooter properly. Use only genuine Yamaha replacement parts. Imitation parts may look like Yamaha parts, but they are often inferior, have a shorter service life and can lead to expensive repair bills.

# PERIODIC MAINTENANCE AND MINOR REPAIR

EAU01581

## Troubleshooting charts

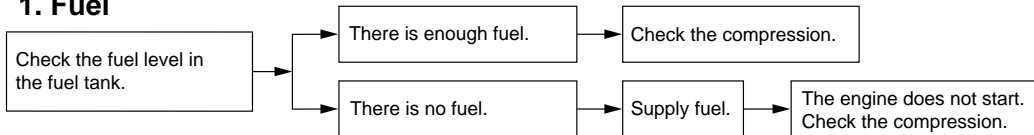
### Starting problems or poor engine performance

EW000125

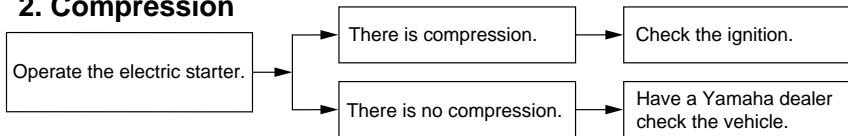
#### **⚠WARNING**

Keep away open flames and do not smoke while checking or working on the fuel system.

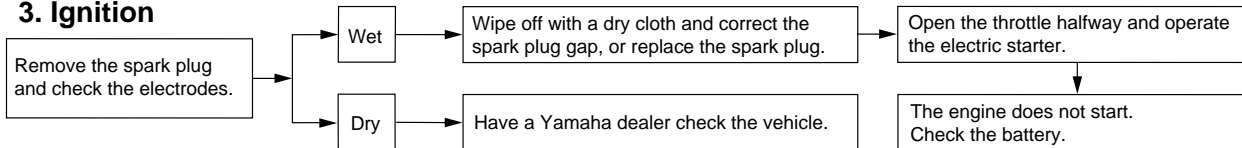
#### 1. Fuel



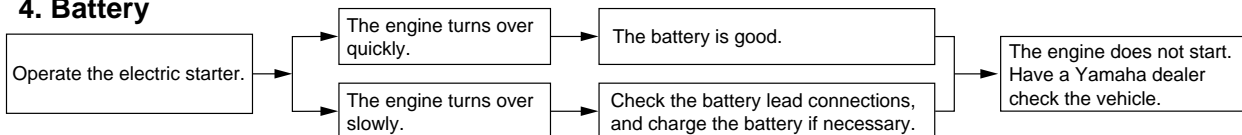
#### 2. Compression



#### 3. Ignition



#### 4. Battery



# PERIODIC MAINTENANCE AND MINOR REPAIR

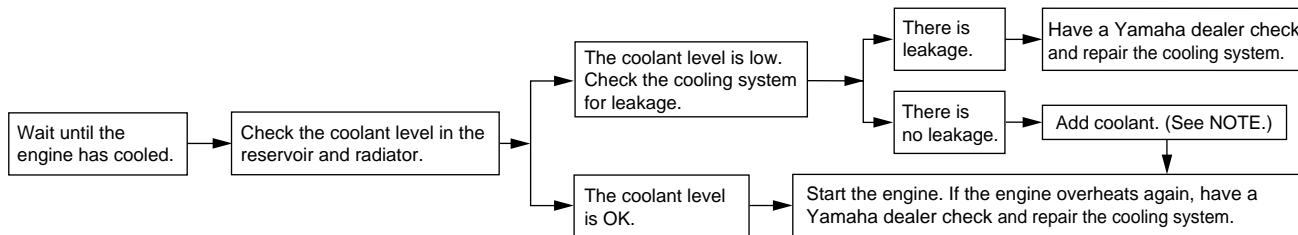
## Engine overheating

EW000070

### ⚠ WARNING

- Do not remove the radiator cap when the engine and radiator are hot. Scalding hot fluid and steam may be blown out under pressure, which could cause serious injury. Be sure to wait until the engine has cooled.
- After removing the radiator cap retaining bolt, place a thick rag, like a towel, over the radiator cap, and then slowly rotate the cap counterclockwise to the detent to allow any residual pressure to escape. When the hissing sound has stopped, press down on the cap while turning it counterclockwise, and then remove the cap.

6



### NOTE :

If coolant is not available, tap water can be temporarily used instead, provided that it is changed to the recommended coolant as soon as possible.

# SCOOTER CARE AND STORAGE

---

---

Care ..... 7-1  
Storage ..... 7-3

# SCOOTER CARE AND STORAGE

---

## Care

While the open design of a scooter reveals the attractiveness of the technology, it also makes it more vulnerable. Rust and corrosion can develop even if high-quality components are used. A rusty exhaust pipe may go unnoticed on a car, however, it detracts from the overall appearance of a scooter. Frequent and proper care does not only comply with the terms of the warranty, but it will also keep your scooter looking good, extend its life and optimize its performance.

## Before cleaning

1. Cover the muffler outlet with a plastic bag after the engine has cooled down.
2. Make sure that all caps and covers as well as all electrical couplers and connectors, including the spark plug cap, are tightly installed.
3. Remove extremely stubborn dirt, like oil burnt onto the crankcase, with a degreasing agent and a brush, but never apply such products onto seals, gaskets and wheel axles. Always rinse the dirt and degreaser off with water.

## Cleaning

### CAUTION:

ECA00011

- **Avoid using strong acidic wheel cleaners, especially on spoked wheels. If such products are used on hard-to-remove dirt, do not leave the cleaner on the affected area any longer than instructed. Also, thoroughly rinse the area off with water, immediately dry it, and then apply a corrosion protection spray.**
- **Improper cleaning can damage windshields, cowlings, panels and other plastic parts. Use only a soft, clean cloth or sponge with mild detergent and water to clean plastic.**

# SCOOTER CARE AND STORAGE

- Do not use any harsh chemical products on plastic parts. Be sure to avoid using cloths or sponges which have been in contact with strong or abrasive cleaning products, solvent or thinner, fuel (gasoline), rust removers or inhibitors, brake fluid, antifreeze or electrolyte.
- Do not use high-pressure washers or steam-jet cleaners since they cause water seepage and deterioration in the following areas: seals (of wheel and swingarm bearings, fork and brakes), electric components (couplers, connectors, instruments, switches and lights), breather hoses and vents.

- For scooters equipped with a windshield: Do not use strong cleaners or hard sponges as they will cause dulling or scratching. Some cleaning compounds for plastic may leave scratches on the windshield. Test the product on a small hidden part of the windshield to make sure that it does not leave any marks. If the windshield is scratched, use a quality plastic polishing compound after washing.

## After normal use

Remove dirt with warm water, a mild detergent, and a soft, clean sponge, and then rinse thoroughly with clean water. Use a toothbrush or bottlebrush for hard-to-reach areas. Stubborn dirt and insects will come off more easily if the area is covered with a wet cloth for a few minutes before cleaning.

## After riding in the rain, near the sea or on salt-sprayed roads

Since sea salt or salt sprayed on the roads during winter are extremely corrosive in combination with water, carry out the following steps after each ride in the rain, near the sea or on salt-sprayed roads.

**NOTE :** \_\_\_\_\_  
Salt sprayed on roads in the winter may remain well into spring.

1. Clean the scooter with cold water and a mild detergent after the engine has cooled down.

## **CAUTION:** \_\_\_\_\_

**Do not use warm water since it increases the corrosive action of the salt.**

2. Apply a corrosion protection spray on all metal, including chrome- and nickel-plated, surfaces to prevent corrosion.

ECA00012

# SCOOTER CARE AND STORAGE

---

## After cleaning

1. Dry the scooter with a chamois or an absorbing cloth.
2. Use a chrome polish to shine chrome, aluminum and stainless-steel parts, including the exhaust system. (Even the thermally induced discoloring of stainless-steel exhaust systems can be removed through polishing.)
3. To prevent corrosion, it is recommended to apply a corrosion protection spray on all metal, including chrome- and nickel-plated, surfaces.
4. Use spray oil as a universal cleaner to remove any remaining dirt.
5. Touch up minor paint damage caused by stones, etc.
6. Wax all painted surfaces.
7. Let the scooter dry completely before storing or covering it.

### **⚠ WARNING**

EWA00002

- **Make sure that there is no oil or wax on the brakes or tires. If necessary, clean the brake discs and brake linings with a regular brake disc cleaner or acetone, and wash the tires with warm water and a mild detergent.**
- **Before operating the scooter test its braking performance and cornering behavior.**

### **CAUTION:**

ECA00013

- **Apply spray oil and wax sparingly and make sure to wipe off any excess.**
- **Never apply oil or wax to any rubber and plastic parts, but treat them with a suitable care product.**
- **Avoid using abrasive polishing compounds as they will wear away the paint.**

### **NOTE :**

Consult a Yamaha dealer for advice on what products to use.

## Storage

### Short-term

Always store your scooter in a cool, dry place and, if necessary, protect it against dust with a porous cover.

### **CAUTION:**

ECA00015

- **Storing the scooter in a poorly ventilated room or covering it with a tarp, while it is still wet, will allow water and humidity to seep in and cause rust.**
- **To prevent corrosion, avoid damp cellars, stables (because of the presence of ammonia) and areas where strong chemicals are stored.**



# SCOOTER CARE AND STORAGE

## Long-term

Before storing your scooter for several months:

1. Follow all the instructions in the "Care" section of this chapter.
2. Drain the carburetor float chamber by loosening the drain bolt; this will prevent fuel deposits from building up. Pour the drained fuel into the fuel tank.
3. Fill up the fuel tank and add fuel stabilizer (if available) to prevent the fuel tank from rusting and the fuel from deteriorating.
4. Perform the following steps to protect the cylinder, piston rings, etc. from corrosion.
  - a. Remove the spark plug cap and spark plug.
  - b. Pour a teaspoonful of engine oil into the spark plug bore.
  - c. Install the spark plug cap onto the spark plug, and then place the spark plug on the cylinder head so that the electrodes are grounded. (This will limit sparking during the next step.)

- d. Turn the engine over several times with the starter. (This will coat the cylinder wall with oil.)
- e. Remove the spark plug cap from the spark plug, and then install the spark plug and the spark plug cap.

### **⚠ WARNING**

EWA00003

**To prevent damage or injury from sparking, make sure to ground the spark plug electrodes while turning the engine over.**

5. Lubricate all control cables and the pivoting points of all levers and pedals as well as of the sidestand/centerstand.
6. Check and, if necessary, correct the tire air pressure, and then lift the scooter so that both of its wheels are off the ground. Alternatively, turn the wheels a little every month in order to prevent the tires from becoming degraded in one spot.

7. Cover the muffler outlet with a plastic bag to prevent moisture from entering it.
8. Remove the battery and fully charge it. Store it in a cool, dry place and charge it once a month. Do not store the battery in an excessively cold or warm place (less than 0 °C or more than 30 °C). For more information on storing the battery, see page 6-30.

### **NOTE :**

Make any necessary repairs before storing the scooter.



# SPECIFICATIONS

---

---

Specifications ..... 8-1  
Conversion table ..... 8-4

# SPECIFICATIONS

## Specifications

**Model** VP300

**Dimensions:**

Overall length	2,170 mm
Overall width	765 mm
Overall height	1,465 mm
Seat height	805 mm
Wheelbase	1,480 mm
Minimum ground clearance	155 mm
Minimum turning radius	1,706 mm

**Weight:**

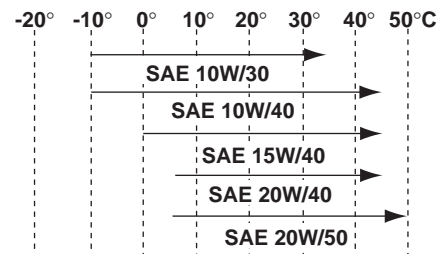
Wet (with oil and a full fuel tank) 174 kg

**Engine:**

Engine type	Liquid cooled, 4 strokes SOHC
Cylinder arrangement	Single cylinder, Forward inclined
Displacement	264 cm <sup>3</sup>
Bore x stroke	71.0 x 66.8
Compression ratio	10:1
Starting system type	Electric starter
Lubrication system	Wet sump

**Engine oil:**

Type



Recommended engine oil  
Classification

API Service SE, SF, SG type  
or higher

**CAUTION:**

**Be sure to use motor oils that do not contain anti-friction modifiers. Passenger car motor oils (often labeled “Energy Conserving II”) contain anti-friction additives which will cause clutch and/or starter clutch slippage, resulting in reduced component life and poor engine performance.**

Quantity

Periodic oil change	1.2 L
Total amount (dry engine)	1.4 L

# SPECIFICATIONS

## Transmission oil:

Type	Engine oil SAE 10W30 (API SE)
Total amount	0.25L

## Coolant system capacity: (including all routes)

1.6L

## Air filter:

Wet type element.

## Fuel:

Recommended fuel	REGULAR UNLEADED GASOLINE ONLY
Fuel tank capacity	10.9L

## Carburetor:

Type / quantity	TK5SE x 1
Manufacturer	TK

## Spark plug:

Type / Manufacturer	DR8EA / NGK
Spark plug gap	0.6—0.7 mm

## Clutch type:

Dry, centrifugal automatic

## Transmission:

Primary reduction system	Helical gear
Primary reduction ratio	40/15 (2.666)
Secondary reduction system	Helical gear
Secondary reduction ratio	37/12 (3.083)
Transmission type	V-belt automatic
Operation	Centrifugal automatic type

## Chassis:

Frame type	Steel tube underbone
Caster angle ((degree))	26°
Trail	90 mm

## Tires:

Front:	
Type	Tubeless
Size	120/80-14 58P
Manufacturer / Model	MICHELIN / PILOT CITY TL
Rear:	
Type	Tubeless
Size	150/70-14 66P
Manufacturer / Model	MICHELIN / PILOT CITY TL
Maximum load *	202 Kg
Air pressure (cold tire):	
Up to 90 kg load*	
Front	180 kpa (1.8 kgf/cm <sup>2</sup> 1.8 Bar)
Rear	190 kpa (1.9 kgf/cm <sup>2</sup> 1.9 Bar)
90 kg load — 160 kg load *	
Front	180 kpa (1.8 kgf/cm <sup>2</sup> 1.8 Bar)
Rear	200 kpa (2.0 kgf/cm <sup>2</sup> 2.0 Bar)
160 kg load — maximum load *	
Front	190 kpa (1.9 kgf/cm <sup>2</sup> 1.9 Bar)
Rear	220 kpa (2.2 kgf/cm <sup>2</sup> 2.2 Bar)

\* Total weight of rider, passenger, cargo and accessories.

# SPECIFICATIONS

## Wheels:

Front	
Type	Cast wheel
Size	14 x MT 2.75
Rear	
Type	Cast wheel
Size	14 x MT 4.00

## Brakes:

Front	
Type	Single disc brake
Operation	Right hand
Type brake fluid	DOT 4
Rear	
Type	Single disc brake
Operation	Left hand
Type brake fluid	DOT 4

## Suspension:

Front suspension	Telescopic fork
Rear suspension	Unit swing

## Shock absorber:

Front fork type	Coil spring/oil damper
Rear shock absorber assembly type	Coil spring/oil damper

## Wheel travel:

Front wheel travel	108 mm
Rear wheel travel	120 mm

## Electrical:

Ignition system type	Transistorized coil ignition
Charging system	AC magneto
Battery	
Model	F9-12B
Voltage/capacity	12 V / 9 Ah

## Headlight type:

Halogen bulb

## Bulbs (voltage/wattage x quantity):

Headlight	12V, 35W/35Wx2
Auxiliary light	12V, 5Wx2
Tail/brake light	12V, 5W/21Wx2
Turn signal light	
Front	12V, 21Wx2
Rear	12V, 10Wx2
High beam indicator light	LED
Turn signal indicator light	LED
Headlight indicator light	LED

## Fuses:

Main fuse:	30 A
Backup fuse:	3 A
Headlight fuse:	15 A
Radiator fan fuse:	15 A
Signaling system fuse:	15 A
Ignition fuse:	7.5 A
Auxiliary DC jack fuse:	3 A
Reserve fuse (x quantity)	30Ax1, 15Ax1, 7.5Ax1

EAU04513

## Conversion table

All specification data in this manual are listed in SI and METRIC UNITS.

Use this table to convert METRIC unit values to IMPERIAL unit values.

Example:

METRIC VALUE	CONVERSION FACTOR	=	IMPERIAL VALUE
2 mm	0.03937	=	0.08 in

Conversion table

METRIC SYSTEM TO IMPERIAL SYSTEM			
	Metric unit	Conversion factor	Imperial unit
Torque	m•kgf	7.233	ft•lbf
	m•kgf	86.794	in•lbf
	cm•kgf	0.0723	ft•lbf
	cm•kgf	0.8679	in•lbf
Weight	kg	2.205	lb
	g	0.03527	oz
Speed	km/h	0.6214	mi/h
Distance	km	0.6214	mi
	m	3.281	ft
	m	1.094	yd
	cm	0.3937	in
	mm	0.03937	in
Volume, Capacity	cc (cm <sup>3</sup> )	0.03527	oz (IMP liq.)
	cc (cm <sup>3</sup> )	0.06102	cu•in
	L (liter)	0.8799	qt (IMP liq.)
	L (liter)	0.2199	gal (IMP liq.)
Miscellaneous	kg/mm	55.997	lb/in
	kgf/cm <sup>2</sup>	14.2234	psi (lbf/in <sup>2</sup> )
	°C	1.8 + 32	°F





# CONSUMER INFORMATION

---

---

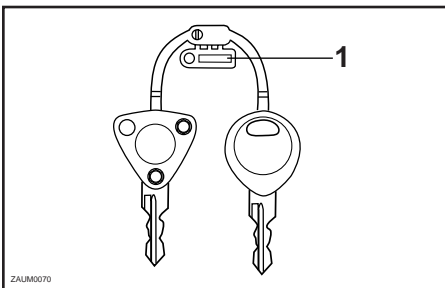
Identification numbers ..... 9-1  
Key identification number ..... 9-1  
Vehicle identification number ..... 9-1  
Model label ..... 9-2

# CONSUMER INFORMATION

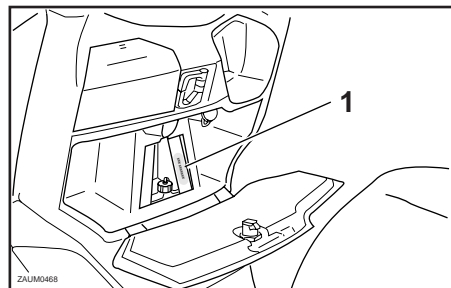
## Identification numbers

EAU02944

Record the key identification number, vehicle identification number and model label information in the spaces provided below for assistance when ordering spare parts from a Yamaha dealer or for reference in case the vehicle is stolen.



1. Key identification number



1. Vehicle identification number

1. KEY IDENTIFICATION NUMBER:

2. VEHICLE IDENTIFICATION NUMBER:

3. MODEL LABEL INFORMATION:

EAU01041

## Key identification number

The key identification number is stamped into the key tag. Record this number in the space provided and use it for reference when ordering a new key.

EAU01044\*

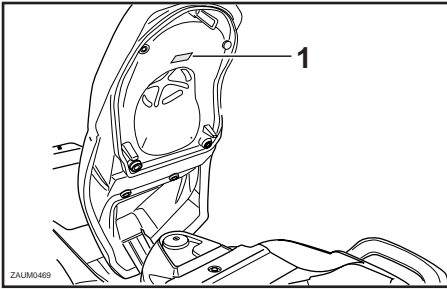
## Vehicle identification number

The vehicle identification number is stamped into the frame behind the panel D. (See page 6-10 for panel removal and installation procedures.)

**NOTE :** \_\_\_\_\_

The vehicle identification number is used to identify your scooter and may be used to register your scooter with the licensing authority in your area.

\_\_\_\_\_



1. Model label

EAU01278

## Model label

The model label is affixed to the bottom of the seat. (See page 3-12 for seat opening procedures.) Record the information on this label in the space provided. This information will be needed when ordering spare parts from a Yamaha dealer.

# INDEX

---

## A

- Acceleration and deceleration ..... 5-3
- Air filter and V-belt case air filter
  - elements, cleaning ..... 6-18
- Anti-theft alarm (optional) ..... 3-7
- Auxiliary DC jack ..... 3-18
- Anti-theft device housing ..... 3-14

## B

- Battery ..... 6-29
- Battery voltage / coolant
  - temperature gauge ..... 3-3
- Brake fluid level, checking ..... 6-24
- Brake fluid, changing ..... 6-25
- Brake lever, front ..... 3-9
- Brake lever, rear ..... 3-9
- Brake levers, lubricating ..... 6-26
- Brake pads, checking ..... 6-24

- Braking ..... 5-3

## C

- Cables, checking and lubricating ..... 6-26
- Carburetor, adjusting ..... 6-20
- Care ..... 7-1
- Catalytic converter ..... 3-11
- Centerstand and sidestand, checking
  - and lubricating ..... 6-27
- Conversion table ..... 8-4
- Coolant ..... 6-17
- Cowlings and panels, removing
  - and installing ..... 6-5

## E

- Engine break-in ..... 5-4
- Engine oil ..... 6-13

## F

- Final transmission oil ..... 6-16
- Front and rear brake lever free play,
  - adjusting ..... 6-23
- Front fork, checking ..... 6-27
- Fuel ..... 3-10
- Fuel consumption, tips for reducing .... 5-4
- Fuel gauge ..... 3-3
- Fuel tank cap ..... 3-10

- Fuses, replacing ..... 6-30

## H

- Handlebar switches ..... 3-8
  - Dimmer switch ..... 3-8
  - Engine stop switch ..... 3-8
  - Horn switch ..... 3-8
  - Hazard switch ..... 3-9
  - Pass switch ..... 3-8
  - Start switch ..... 3-8
  - Turn signal switch ..... 3-8
- Headlight bulb, replacing ..... 6-32

## I

- Identification number ..... 9-1
- Ignition circuit cut-off system ..... 3-16
- Indicator lights ..... 3-2
  - High beam indicator light ..... 3-2
  - Low beam indicator light ..... 3-2
  - Turn signal indicator lights ..... 3-2

## K

- Key identification number ..... 9-1

## L

- License plate light bulb, replacing ..... 6-35

Luggage hook ..... 3-15

## M

Main switch/steering lock ..... 3-1

Model label ..... 9-2

Multi-function display ..... 3-4

## P

Parking ..... 5-5

Part locations ..... 2-1

Periodic maintenance and lubrication

chart ..... 6-2

Pre-operation check list ..... 4-1

## S

Safe-riding points ..... 1-2

Seat ..... 3-12

Shock absorber assemblies,

adjusting ..... 3-14

Sidestand ..... 3-16

Spark plug, checking ..... 6-11

Specifications ..... 8-1

Speedometer ..... 3-2

Starting off ..... 5-2

Starting the engine ..... 5-1

Steering, checking ..... 6-28

Storage ..... 7-3

Storage compartments ..... 3-12

## T

Tail/brake light bulb or rear turn

signal light bulb, replacing ..... 6-34

Throttle cable free play, adjusting ..... 6-20

Throttle grip and cable,

checking and lubricating ..... 6-26

Tires ..... 6-21

Tool kit ..... 6-1

Troubleshooting ..... 6-35

Troubleshooting charts ..... 6-36

Turn signal light bulb (front),

replacing ..... 6-34

## V

Valve clearance, adjusting ..... 6-21

Vehicule identification number ..... 9-1

## W

Wheel bearing, checking ..... 6-29

Wheels ..... 6-23







PRINTED IN FRANCE  
2004.02 (E)